

1-2008

LandMarks, Winter 2008

Geoffrey Bates
Governors State University

Follow this and additional works at: http://opus.govst.edu/nmsp_landmarks

Recommended Citation

Bates, Geoffrey, "LandMarks, Winter 2008" (2008). *LandMarks*. Book 1.
http://opus.govst.edu/nmsp_landmarks/1

This Book is brought to you for free and open access by the Nathan Manilow Sculpture Park at OPUS Open Portal to University Scholarship. It has been accepted for inclusion in LandMarks by an authorized administrator of OPUS Open Portal to University Scholarship. For more information, please contact opus@govst.edu.

Inside LandMarks

- Park Marks 30th Year
- Director ReMarks
- Park Board established
- Docent Program Debuts
- Strautmanis Painting Discovered
- Archives Growing
- News from the Park
- February – May
Calendar of Programs and Events



Richard Hunt's **Outgrown Pyramid II** (1973-74) arrives on campus, ca. 1976
(photo: Dick Burd)



Nathan Manilow Sculpture Park Marks 30th Year

The year 2008 will mark a major milestone for Governors State University's Nathan Manilow Sculpture Park. Home to twenty-six sculptures – many by internationally recognized artists – the park will celebrate the thirtieth anniversary of its birth. A recognized pioneer in the exhibition of public art, the Nathan Manilow Sculpture Park has maintained this distinction by continuing to build one of the most respected collections of outdoor sculpture in the nation.

Little about the park has remained the same in the years since 1978 when university president Dr. Leo Goodman-Malamuth asked the Governors State University Foundation and the Illinois Board of Governors Universities to acknowledge the role of the Nathan Manilow family in the establishment of the park by officially naming the collection of sculptures **The Nathan Manilow Sculpture Park**. Until that time, the collection had been known as the Governors State University Center for Monumental Art. The new name reflected the influence of visionary developer Nathan Manilow and his son Lewis on the landscape of Chicago's far south suburbs.

Evidence of how much has changed can be seen throughout this newsletter in articles about the new maintenance program, information about the new board, the schedule of public programming, and the note from the director. The element that has remained the same and continues to endure is the silent presence of the artwork. Each piece is a testament to the imagination and audacity of the artist who created it.

Even now, Lewis Manilow's presence as an ex-officio member of the new Nathan Manilow Sculpture Park Board helps provide continuity in the life of the park. As the park moves into its fourth decade, the board will help insure that additions to the collection will be of the same caliber as that established by early supporters. Additionally, the board will work to integrate this outdoor museum more effectively into the life of the university and its community with programming and outreach events. Look for notices of anniversary programming in future newsletters and plan on joining us as we celebrate this singular cultural resource.



Photo above: Mark diSuvero's **Yes! For Lady Day** (1968-69) stands lonely lookout in this pre-1976 aerial view of the GSU campus.(photo: Dick Burd)

Photo to right: Jerry Peart's **Falling Meteor** (1976)(left) and Michael Dunbar's **Oscar's Inclination** (2003) bask in early morning autumn light.
(photo: Bruce Crooks)





Governors State University's Nathan Manilow Sculpture Park Board

Geoffrey Bates, Director and Curator

Susan Ormsby Olympia Fields, IL President
 Josephine Ferguson Valparaiso, IN Vice-President
 Jacqueline Lewis Olympia Fields, IL Secretary
 Arthur Bourgeois Richton Park, IL
 William Brazley Olympia Fields, IL
 Ruth Cmkovich Dyer, IN
 Bob Emser Eureka, IL
 Susan Rakstang Chicago, IL
 Lewis Manilow, Ex-officio Chicago, IL
 Elaine Maimon, Ex-officio Crete, IL
 Gebeyehu Ejigu, Ex-officio Crete, IL
 Joan Vaughan, Ex-officio Tinley Park, IL

Website: <http://webservice.govst.edu/sculpture/index.html>
 General Email Address: sculpture@govst.edu
 Phone: 708.534.4486 Fax: 708.534.8399
 Hours: Dawn until dusk every day
 Admission: Free admission to park, some activities have fees.
 LandMarks is published three times a year in January, May, and September
 © 2008 Governors State University's Nathan Manilow Sculpture Park
 Please direct questions or comments to Geoffrey Bates, Director and Curator

Top of page: *House Divided* 1983 Bruce Nauman
 Photo credit above right: Susan Bates
 On cover: *Falling Meteor* 1975 Jerry Peart
 Below: *Phoenix* 1967 Edvins Strautmanis



ReMarks

Welcome to the debut issue of LandMarks! With the publication of this piece, the Nathan Manilow Sculpture Park signals its re-emergence as an active contributor to the cultural life of the Chicagoland region. I invite you to -

Check our Events Calendar.

Whether you are new to art, a seasoned visitor of the world's museums, or simply interested in spending time outdoors ranging across our prairie landscape - whether you're six, sixteen, or sixty-six - whether you walk our paths weekly or haven't yet made the short journey to University Park - you're sure to find an activity or event on our calendar to pique your interest and prompt a visit.

Consider volunteering as a Docent, Park Ranger, Committee Member - or all three!

Our docent orientation program will provide you with a basic history of sculpture and 3-D design as well as the tools to provide a knowledgeable tour of the sculpture park. As our programming grows, we will need volunteers to assist with school age tours and special events, too. Park Rangers spend three mornings during our tour season working on the grounds in proximity to sculpture and helping make them look their best. Committee members work with our board to help organize special events, assemble exciting off-site trips to arts-related destinations both within our region and beyond, and educate our visitors about the park. General Volunteers help out with special events, tours, mailings, and providing support for the park staff in other ways.

Join our effort.

Help us grow! You care about the arts. Be recognized as someone who appreciates a good investment in quality arts programming. We are asking for your financial support to grow our calendar of events; reach out to our diverse constituency with innovative, new, and unexpected hands-on experiences of the park, its landscape and its artworks; care for our artworks; and enlarge the collection. Through your contribution, you'll help establish a solid foundation on which we will build a 21st century outdoor museum organization. Visit the Governors State University website at www.govst.edu/foundation/DonateIntro.asp and click on "Select a giving option." Select Nathan Manilow Sculpture Park and complete your donation. Or contact the sculpture park office by phone at **708.534.4486** or by e-mail at sculpture@govst.edu and we'll be happy to discuss giving options and recognition opportunities.

The Nathan Manilow Sculpture Park has re-emerged because of the determined efforts and enthusiastic support of a variety of people: Lewis Manilow has devoted time over four decades to the health and vitality of the park and its collection. Governors State University's new President, Dr. Elaine Maimon, signaled her unqualified support for the park and its programs by making it a centerpiece of her installation speech in early November. Former GSU President Stuart Fagan and his wife, Dr. Ora Simcha-Fagan, not only helped grow the park's collection, but found funding for conserving some of our most significant works. Susan Rakstang, Associate VP for Facilities Development and Management and Kevin Barto, Superintendent of Grounds, continue to improve upon an already dramatic landscape setting for the work. The Nathan Manilow Sculpture Park Board has dedicated over a year of effort to help bring this moment to fruition. Kathy Knapp, a personal friend, generously contributed the name for this newsletter. Our visitors continue to spread the word about this little-known gem in the south suburbs of Chicago. My sincere thanks goes out to all of these people and to anyone else who has helped bring about this remarkable renaissance.

Cordially,

Geoffrey Bates
Director and Curator



Park Board established

Seeing the need of an advocacy group for the Nathan Manilow Sculpture Park, outgoing park Director Dr. Ora Simcha-Fagan brought together a group of interested individuals in October of 2006 and asked that they consider constituting themselves as a board. After eleven months, many meetings, and a new University President and Park Director, Governors State University's Nathan Manilow Sculpture Park approved operating by-laws at their August meeting.

Currently made up of twelve members drawn from both the university and public spheres, the board will work to promote the park's interests inside the university structure and throughout the region, provide guidance for the park's growth, and drive the agendas of standing committees that will work to support the activities of the sculpture park.

Committee opportunities are available in the following areas: Membership; Development; Off-site Tours; Docent Support; Conservation, Exhibition, and Acquisition; and Nominating and Governance. Contact the park office at (708) 534-4486 to request more information about committee work.

Imagine yourself here — Director Geoff Bates discusses Bruce Nauman's *House Divided* (1983) with a tour group in October. (photo: Jeff Stevenson)



Susan Ormsby, President of the Nathan Manilow Sculpture Park Board with James Brenner's *Passage*, 1998, in background. (photo: Lindsay Gladstone)



Frank Florenze (center) and workers set the concrete forms for **Passage's** new foundation. (photo: Geoff Bates)



An October view of **Passage** at its new location (photo: Geoff Bates)



The artist gently guides a section into place. (photo: Bruce Crooks)



News from the Park

Passage finds new home

How do you move an 11-ton sculpture made up of twenty-two separate sections? With a lot of planning and a little luck! Departing Director Dr. Ora Simcha-Fagan worked closely with artist James Brenner and incoming Director Geoffrey Bates to determine a new site for **Passage**, (1998) Brenner's popular interactive work made of mild steel. The goal was to both improve drainage and provide visitors with an "aerial" view of the work so they would be able to appreciate its complex simplicity. The three determined that the 'courtyard' area behind the Faculty Office Center would meet the requirements nicely and, with fingers crossed and with the assistance of Mike Baur, another park artist, the move was successfully completed on the day of the summer solstice.

Throne (for Dr. Martin Luther King, Jr.) is restored and relocated

Ted Sitting Crow Garner's serpentine piece, **Throne (for Dr. Martin Luther King, Jr.)**, (1992) was thoroughly restored during the summer after it was disassembled, sandblasted, painted, and then re-installed at its new site. The artist was involved in every step of the process and the park wishes to acknowledge Ted's donation of time in the completion of the move. Its new location, in front of Governors State University's Family Development Center on the south side of University Parkway provides not only a neutral backdrop for the lively work but easier access for many of its most enthusiastic patrons – children arriving and leaving the Center.

Funding for this project was made possible via a grant from Mark diSuvero's *Athena Foundation*.

The Nathan Manilow Sculpture Park extends its thanks to the foundation for its generous contribution to the welfare of artwork in the park.

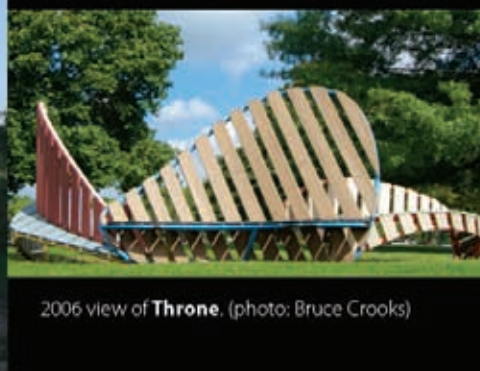
Phoenix reborn with new coat of paint

Edvins Strautmanis's steel I-beam sculpture from 1968, **Phoenix**, was straightened on its pad, sandblasted, primed, and given a new coat of paint during the summer. The signature artwork was the first sculpture to be permanently installed on the GSU campus and was a gift of Lewis Manilow.

September view of **Phoenix**. (photo: Geoff Bates)



Kevin Barto, Superintendent of Grounds for the Facilities Development and Management area discusses moving **Phoenix** with Bill Lopez.



2006 view of **Throne**. (photo: Bruce Crooks)



Docent Program Debuts

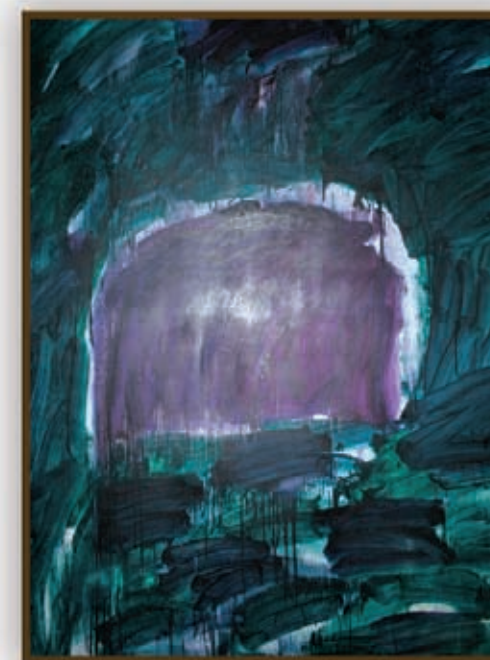
Barbra Streisand sang, "People who love people are the loveliest people in the world." We think people who love art **AND** people are the loveliest people in the world and we're looking for some who are interested in sharing their passion with our visitors. Docents are the backbone of our tour program and represent the park to our public. We'll expect you to be friendly, caring, and courteous at all times. Our docents are sent out in pairs so you'll always have someone to work with when you're with your tour group. You'll be scheduled to provide at least one Sunday tour each season. Docents will be called on to give tours for special groups, school groups, and to assist during special events (to which they receive free admission). Docents are in the know and get the skinny on any upcoming changes in the park, prairie, or events!

Docent Orientation

You're probably wondering how you'll know where to go and what to say on your tours. Our docent orientation program is not for the faint of heart – you'll begin by meeting six times in the evening over an 11 week period for lively one-and-a-half-hour presentations that will provide a history of the Nathan Manilow Sculpture Park, a basic history of sculpture and 3-D design, and hints on dealing with the art public. Don't worry, we'll supply refreshments and a break during each session. There'll be a special morning tour of the park (more snacks) on Saturday, April 5. There will be (friendly) quizzes and opportunities for role playing. By the time you graduate and receive your official sculpture park cap, you'll feel comfortable walking the paths of the park and talking about the art that populates our prairie setting. All docents must successfully complete docent orientation in order to participate in tours or special events. The orientation program begins Thursday, February 21 and continues on the first and third Thursdays of the month through May 1. The evening programs are scheduled from 7:30 until 9 p.m. The cost of the docent program is \$25.00 per person. Use the special form on the last page of this newsletter to sign up now or contact us by e-mail at sculpture@govst.edu and we'll give you a call!



Strautmanis painting discovered



Newly discovered Strautmanis painting, **Calm and Free**, (1967) (photo: Geoff Bates)

Edvins Strautmanis's (1933-1992) steel I-beam sculpture **Phoenix** (1968) was the first sculpture to arrive at the Nathan Manilow Sculpture Park. An informal history of the park composed in 1991 provides some background history about its arrival. "Originally commissioned in 1967 for a Hyde Park apartment complex, the work was rejected by the apartment building inhabitants. They found its monumental size and abstract design inappropriate. Lewis Manilow, owner of the building, called Bill Engbretson [then GSU president] and let him know that the sculpture was available. United States Steel supplied the flatbed used to ship "**Phoenix**" to its new home in the southern suburbs."

In late October, Karen Kissel, GSU Associate Vice-President for Financial Services and Comptroller and NMSP Director and Curator Geoff Bates discovered a painting by Strautmanis hanging in the College of Arts and Sciences offices. The painting, completed in 1967 (the same year **Phoenix** was commissioned) demonstrates the artist's mastery of the Abstract Expressionist vocabulary of slashing, wet, brushwork which activates the entire surface of the painting. Stephen Rosenberg, of Rosenberg and Kaufman Fine Arts, Ltd. recently wrote of Strautmanis's work, "Highly regarded as one of the most remarkable and original abstract painters of the latter part of the twentieth century, the Latvian-born, Art Institute of Chicago educated Strautmanis has long been known for his intense canvases that are rough-hewn, layered, full of sensually ploughed paint and monumentally scaled."



Archives growing

The number of digitally archived images of the Nathan Manilow Sculpture Park's history is growing each month. Gathered together from a variety of sources with the assistance of librarians Nancy Shlaes and Erin Engelbrecht, slides are individually dusted then scanned. The images are currently housed in the sculpture park office. In the future, they will be placed on a shared file to provide easier access to university personnel and, eventually, to the public at-large.



Lewis Manilow and a maquette for Joel Shapiro's **Untitled** cast-bronze sculpture, (ca. 1983) (photo: Dick Burd)



Calendar of Events – February through May 2008

Join us for just one or for a series of events at the Nathan Manilow Sculpture Park

For Adults

Two For Tuesdays – Too busy for a full tour of the sculpture park? These informal, lively half-hour presentations will compare and contrast a pair of selected works from the collection.

FREE
 First and third Tuesdays of the month February 5 — June 3
 Rm D-1497 – D-wing
 12:30 and 3:45 p.m.
 No pre-registration required
 Contact sculpture@govst.edu for schedule of sculptures

Docent Orientation Program – Looking for more involvement with the park? Sign up for our Docent orientation program! Upon graduation you'll be paired with a fellow docent and qualified to conduct tours of the park for schoolchildren and adults as well as assist with special events. Evening sessions include a break with light refreshments. Saturday morning tour includes a continental breakfast.

\$25.00
 Six evening programs — Location President's Conference Center
 Every other Thursday, February 21 – May 1
 7:30 – 9 p.m.
 One morning program
 Saturday, April 5
 Morning program 8:30 – 11:30 a.m.
 Pre-registration and payment required by February 15

Explore ArtChicago 2008 – (*Like Christmas, it comes but once a year!*) Join NMSP Director and Curator Geoff Bates for an informal jaunt to Chicago's Merchandise Mart to experience one of the most important annual art fairs in the world. You'll meet at the Metra Station in University Park, take the one-hour ride into the city, connect to the Brown line at Wabash, and arrive at the mart just as the fair opens. Once there, your guide will explain how the fair works and escort you to several galleries where representatives will discuss what they're exhibiting and answer questions. Lunch and the afternoon will be on your own as you ramble through what is actually five fairs in one place: ArtChicago, Artropolis, NEXT, The Artist Project, and the Merchandise Mart Spring International Antiques show. You'll gather again in the late afternoon to discuss what you saw and get some perspective. We return to the University Park Metra station in the early evening.

Admission to the Fair: \$20.00
 Saturday, April 28
 8 a.m. – 6:30 p.m.
Pre-Registration and payment for fair required by April 20.

For Children and Families

Summer Season Opens – Why wait until Memorial Day to start your summer? Join us as we open the Summer 2008 Park Season on Saturday, May 3 for one of the great activities listed below – or just stop by, take a walk, and say hello! Volunteers will be manning a welcome table in the Hall of Governors from 9 a.m. until 4 p.m. They will be happy to provide you with a park map and answer your questions about programming, volunteering, or give you tips for your own tour.

FREE
 Saturday, May 3
 9 a.m. – 4 p.m.
 No pre-registration required

Kids, Kolors, and Kites – Kites are 3-dimensional objects that FLY! Join the Illinois Kite Enthusiasts club and park docents for an exciting morning of creativity. You'll learn about the history of kites and then create your own design on your kite, rig it, and finally, watch it soar above the trees and sculptures.

\$10.00 per kite (includes kite and art materials)
 Cafeteria Annex – D-wing
 Saturday, May 3
 8:30 a.m. – 12:30 p.m.
 Children 8 years-old and older. All children must be accompanied by an adult.
 No pre-registration required. Payment by cash or check only.

Guided Sculpture Park Tours – Take the "A" tour, which covers the northern portion of the park, or the "B" tour, which will explore the southern half – either will provide you with new insight into the remarkable vision of our artists. All tours last approximately 1½ to 2 hours. Guests should wear comfortable footwear since the paths are uneven and extensive walking is required. Tours will begin at the patio behind the Hall of Governors in D-wing.

FREE
 Saturday, May 3
 "A" Tour: 9:30 – 11:30 a.m.
 "B" Tour: 1:30 – 3:30 p.m.
 No pre-registration required

Bike Sculpture Park Tour – Enjoy a completely different view of the park – from your bicycle seat! As part of our Season Opening event, we'll be giving our first-ever bike tour of the park. The tour will begin near Oscar's Inclination behind D-wing and will consider every sculpture on view within the park. A children's activity sheet will be available for kids 8 years-old and older. All participants must wear bicycle helmets. There will be some riding on public road surfaces.

FREE
 Begin near Oscar's Inclination (#4 on map)
 Saturday, May 3
 2 – 4 p.m.
 No pre-registration required

Richard Rezac's **Frame** (2005) reveals itself to visitors during a September 2007 tour. (photo: Geoff Bates)



CAMP WOL-I-NAM

What could be better than spending a week making friends and art? Boys and girls ages 10-13 will experience the best of both as they range across 100 acres of the Nathan Manilow Sculpture Park and explore ideas about art, sculpture, and Prairie Science during structured activity periods. Divided into groups of 12-13, campers will enjoy daily structured sessions of 2-D art, 3-D art, Prairie Science, and swimming. The week will end with an exhibition opening event of campers' artwork on Friday evening, June 20 from 4:30 until 6:00 pm. All materials are included in the registration fee. All campers will also receive free admission to the GSU Center for the Performing Arts Center's summer youth production of Willy Wonka and the Chocolate Factory on June 27!

Fee: \$250.00
 June 16 – 20
 8:30 a.m. – 4:30 p.m. daily
 Age: 10 – 13 yrs.
 Note: Campers bring their own lunch; an afternoon snack will be provided. Camp rules require that campers leave cell phones and personal listening devices at home.
Pre-registration and pre-payment required by June 6

Overnight at CAMP WOL-I-NAM (optional)

Those adults who are lucky enough to have a child enrolled in Camp Wol-I-Nam can experience the great outdoors with their son or daughter – right here in the South Chicagoland Suburbs! The evening will include such camp favorites as swimming, campfire, sing-a-longs, competitive games, s'mores, flashlight sculpture park tours – and more! Each camper must have at least one parent accompany them for the evening. Tenting will be around **Illinois Landscape No. 5**, the monumental, yellow painted steel sculpture on the east side of campus. Swimming will take place in GSU pool.

Fee: \$30.00 per person
 June 20/21
 6:00 p.m. – 8:30 a.m. Friday night/ Saturday morning
 Note: All campers must be enrolled in the regular Camp Wol-I-Nam sessions. Campers supply tents, sleeping gear. All campers MUST be accompanied by at least 1 parent.
Pre-registration and pre-payment required at time of registration for camp

..... < Clip here >

You belong here. Join us as we build an exciting new organization!

The board of the Nathan Manilow Sculpture Park invites you to become part of a new vision. A park that is for everyone. An outdoor museum that is open dawn until dusk with free admission every day, 365 days a year. A park with art that challenges your everyday expectations. Walk our prairie landscape – feel the sun on your face and the wind in your hair. This is art you can interact with.

Name _____ Address _____ City _____ State _____ Zip _____
 Telephone _____ E-mail _____

I want to volunteer! Send me more information on being a: Docent Park Ranger Committee Member Volunteer
 (check one or more)

I want to contribute. Here is my donation of \$ _____ Please make your check payable to: GSU Foundation - NMSP

Please complete this form and mail to:
 Nathan Manilow Sculpture Park, Governors State University, 6-372, 1 University Parkway, University Park, IL 60466-0975
 708.534.4486 E-mail us at sculpture@govst.edu

..... < Clip here >

Selected works in the collection were cleaned during the Fall as part of a regular maintenance program that has been initiated for the park. Mark diSuvero's **Yes! For Lady Day** (1968-69), Tony Tasset's **Paul** (2005, detail below), and Jerry Peart's **Falling Meteor** (1975, see cover) were singled out for a thorough cleaning by pressure washer, sponge, and elbow grease. Using a cherry-picker bucket for access to the upper reaches of **Paul** and **Yes! For Lady Day** was a new experience for park director Geoff Bates. "You get a whole new perspective on the park and the objects from up there," he commented.





... the nature of sculpture

Governors State University, G-372
1 University Parkway
University Park, IL 60466-0975

708.534.4486

E-mail us at sculpture@govst.edu



Open to visitors dawn until dusk every day

Non profit org
U.S. Postage Paid
Park Forest, IL
Permit No. 178



 **LandMarks** The newsletter for the Nathan Manilow Sculpture Park