

1-28-2006

ABBA: A Celebration

Center for Performing Arts

Follow this and additional works at: http://opus.govst.edu/cpa_memorabilia

Recommended Citation

Center for Performing Arts, "ABBA: A Celebration" (2006). *Center for Performing Arts Memorabilia*. Book 247.
http://opus.govst.edu/cpa_memorabilia/247

This Book is brought to you for free and open access by the Center for Performing Arts at OPUS Open Portal to University Scholarship. It has been accepted for inclusion in Center for Performing Arts Memorabilia by an authorized administrator of OPUS Open Portal to University Scholarship. For more information, please contact opus@govst.edu.



Governors State University

CENTER FOR PERFORMING ARTS

presents

ABBA *a celebration*



January 28th. 2006

2005/2006 Season sponsored in part by a generous grant from:



Pasquinelli Family Foundation
Sage Foundation
Medhurst Children's Fund

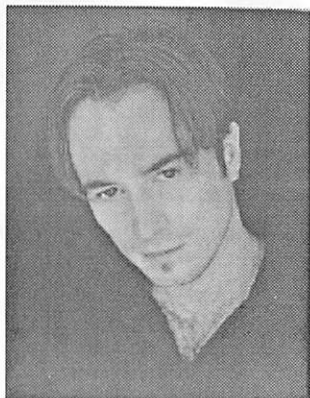
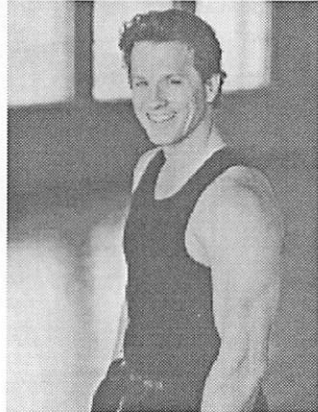




Abba's musical style established itself as one of the most distinctive and unique genres of popular music of the last 30 years, embraced by all generations and nations, refusing to age or retire. The songs have an energy and vibrancy which will endure the changing times we live in - long may the magic of Abba's music continue to touch our hearts and souls.

Performer Biographies

Randall Patterson comes from Springfield, MO. His wide ranging vocal talents have taken him to cities all over the world, including New York, Las Vegas, Paris and Tokyo. He hopes to expand his traveling resume with this tour of Abba! Randall has had the pleasure of being affiliated with companies such as Jean Ann Ryan Productions, Greg Thompson Productions, Princess Cruise Lines, Norwegian Cruise Line and Tokyo Disney. Some of his favorite roles over the years have been Conrad Birdie in **Bye Bye Birdie**, Danny Zuko in **Grease** and The Pirate King in **The Pirates of Penzance**. He hopes that you enjoy his performance in Abba tonight.



Kevin Noonchester has been burning up the airwaves with voiceovers currently airing on television & radio for a variety of products from DirecTV to Verizon Wireless. Of numerous regional theater credits, Kevin's favorite roles include Frankie in **Forever Plaid**, Mordred in **Camelot**, Armand in **The Scarlet Pimpernel**, Joseph in **Dreamcoat**, Finch in **How To Succeed...**, the Title Role in **Pippin** and as future husband (& now bandmate) to his beautiful and talented fiancée, Tamara Giffin.

Performer BiographiesContinued



Tamara Giffin is excited to be touring with such a talented group of people. While Abba has always been a staple of any karaoke evening she has ever had, she never knew that all the while it was actually "job preparation!" Tamara holds a BFA in Musical Theater from CSUF and teaches Performing Arts in Long Beach. Recent theater roles include: Rose in **George M!**, Margie in **Crazy For You**, Meg in **Brigadoon**, Lady Diss in **Me and My Girl**, and The Witch in **Into The Woods**. Tamara would like to dedicate each and every performance to her wonderful and supportive fiancé, Kevin.

Tina Walsh has graced the footlights of Las Vegas for many years. She recently played opposite Hugh Jackman in , **Hugh Jackman in Time**, directed by George Wolfe and choreography by Kathleen Marshall. Tina completed a two year run of the ever popular Broadway musical **MAMMA MIA!**, Premiere Las Vegas, where she originated the lead role of Donna Sheridan. She co-starred with Rick Springfield in the newly version of **EFXALIVE!** Directed and choreography by Broadway's Jerry Mitchell. Tina also co-starred opposite 9 time Tony award winner Tommy Tune in **EFX** as well as the phantom himself Michael Crawford in the original premier of **EFX**. You can hear Tina on the original **EFX** cast CD with Michael Crawford in the duet "Tonight" Phil Ramone produced. Tina's most challenging and rewarding role to date is being mother to her 14 year old son, Austin. There's no script, manual, or dress rehearsal!



Louise Johnson Dancer/Singer
John Plows....Drummer
Cindy Willems...Choreographer

Cindy Willems Dancer/Singer
John FredericTechnical Director
Andrew Wyke....Musical Director

Musical Associates London Rob McIntosh and Andrew Wyke Producers
Exclusive Agent Bresner Artists, Inc. Bresnermgt@aol.com



thanks for coming to the show!

COMING SOON TO
THE CENTER FOR PERFORMING ARTS:

- | | |
|--------------------------------------|----------|
| February 3rd and 4th Flanagan's Wake | 8 PM |
| Sat. February 11 David Sanborn | 8 PM |
| Sat. February 25 Circus Nexus - | 3 & 7 PM |
| Sat. March 11 Tony Kenny's Ireland | 8 PM |
| Sun. March 10 Glen Miller Orchestra | 8 PM |
| Sun. March 19 Bea Arthur | 4 PM |
| Sat. April 1 The Neville Brothers | 8 PM |
| Sun. April 23 Patti Page | 4 PM |
| Sat. April 29 Ballet Hispanico | 8 PM |
| Sat. May 13 Comedy Pet Theater | 3 & 7 PM |
| Sat. May 21 Debbie Reynolds | 8 PM |