

4-15-1987

Inscapes, 1987-04-15

Office of University Relations

Follow this and additional works at: <http://opus.govst.edu/inscapes>

Recommended Citation

Governors State University Office of University Relations, Inscapes (1987, April 15). <http://opus.govst.edu/inscapes/62>

This Newsletter is brought to you for free and open access by the University Newsletters at OPUS Open Portal to University Scholarship. It has been accepted for inclusion in Inscapes by an authorized administrator of OPUS Open Portal to University Scholarship. For more information, please contact opus@govst.edu.

Governors State University
Inscapes

TAX REFORM WORKSHOP...A workshop on the 1986 Tax Reform Act is being sponsored by the Personnel Office for staff and training development. The IRS will explain major changes in tax legislation on Thursday, April 30, from 1 to 3 p.m. in Engbretson Hall. All faculty, administrators and civil service staff are encouraged to attend.

A FOND FAREWELL...The GSU community and especially PPO wish plant operating engineer **Bill Miller** well on his recent retirement from GSU after 13 years. He was honored in a retirement ceremony by **Dr. Leo Goodman-Malamuth**, **Dr. Virginio Piucci (A&P)**, **Mike Foley (PPO)**, **Mike Reilly (PPO)** and **Bural Wilkerson (REG)**. Bill plans to spend much of his newly-acquired free time traveling, fishing and plain old tinkering around the house. He has been a great asset to our maintenance staff and will be missed.

GSUings...John Payne (CAS), M.F.A., participating in a discussion of his work on the nationally broadcast show, "American Art Form" in March...**Dr. Leo Goodman-Malamuth**, who also serves this year as president of the American Association of University Administrators, being interviewed on WBDO Radio, Orlando, Fla., on March 18, discussing the AAUA's annual meeting at the Orlando Sheraton Twin Towers on Thursday and Friday of that same week...**Peg Donohue (OCW)** being named chairperson of the Marketing and Publicity Committee for the South Suburban Association of Commerce and Industry's Business Expo '87 to be held October 6-7 at the Matteson Holiday Plaza...**Roger Paris (OCW)** receiving a Creative Programming Award from the Conferences and Institutes Division of the National University Continuing Education Association for the **Madeline Hunter** workshops. He received his award at the 72nd NUCEA Annual Conference in Kansas City, Mo., April 5...**Dr. Hugh Rank (CAS)**, appearing in March in Atlanta, Ga., as propaganda analyst, on the "Politics of Language" panel at the Conference of College Composition and Communication (CCCC)...and in April conducting the poetry sessions at the Writer's Workshop for South Suburban Students, held at Bloom Trail High School...**Dr. Alma Walker-Vinyard (CAS)** serving as a judge in the Third Annual Poetry and Poster Contest for students in grades 7-12, covering the entire south suburban school system. The theme for this year's contest is "Open the Door to a Rainbow of Neighbors" and is an attempt to develop interracial acceptance among students...also serving as a guest speaker at the South Suburban ACT-SO Banquet to be held at the Holiday Inn in Harvey and conducting a workshop for approximately 50 teacher participants as a part of the Teaching about Africa Institute III project, May 2 at Chicago State University...**Dr. Helen Hughes (CE)** addressing the Unitarian Church of Oak Park in March on "The Gaia Hypothesis: A New Look at Our Planet Earth on the Occasion of the Vernal Equinox."

STAFF DIRECTORY UPDATE...Please make the following changes in your staff directory:

Additions...

Fletcher, Patricia
Secretary, UL
Ext. 2228

Gilman, F. David
Writing Counselor, CLA
Ext. 2564

Deletions...

Bacon, Phyllis
Miller, William

CAFETERIA SCHEDULE

Week of April 13-17...MONDAY-Cream of chicken soup w/1 pkg crackers; Chili con carne w/1 pkg crackers; Entree: Ham steak; Turkey imperial sandwich; Buttered carrots; Sweet potatoes. TUESDAY-Old fashioned bean soup w/1 pkg crackers; Chili con carne w/1 pkg crackers; Entree: Breaded pork cutlet w/brown gravy; Sloppy Joe on bun; Stewed tomatoes and zucchini; Whipped potatoes. WEDNESDAY-Cream of spinach soup w/1 pkg crackers; Chili con carne w/1 pkg crackers; Entree: Veal cutlet parmesan; French dip beef on roll; Medley vegetables; Whipped potatoes. THURSDAY-Minestrone soup w/1 pkg crackers; Chili con carne w/1 pkg crackers; Entree: Baked meat loaf; Creamed turkey over noodles; Peas and carrots; whipped potatoes. FRIDAY-Soup dejour w/croutons; Chili con carne w/1 pkg crackers; Entree: Popcorn shrimp, sauce, fries and cole slaw; Batter fried whiting, Vegetable dejour.

Week of March 23-27...MONDAY-Creole soup w/1 pkg crackers; Chili con carne w/1 pkg crackers; Entree: Pot roast beef; Mostaccioli w/meat sauce and garlic toast; Wax beans and pimento; Whipped potatoes. TUESDAY-Lima bean soup w/1 pkg crackers; Chili con carne w/1 pkg crackers; Entree: Roast turkey breast w/dressing; B.B.Q. beef sandwich; Seasoned peas; Candied sweet potatoes. WEDNESDAY-Cream of celery soup w/1 pkg crackers; Chili con carne w/1 pkg crackers; Entree: Roast pork w/dressing and apple sauce; Swedish meatballs over rice, roll and butter; Mixed vegetables; Oven browned potatoes. THURSDAY-Garden vegetable soup w/1 pkg crackers; Chili con carne w/1 pkg crackers; Entree: Fillet of chicken, fries and cole slaw; Fillet of chicken sandwich w/lettuce and tomato; Two tacos w/trimmings; Franks and beans. FRIDAY-Tomato rice soup w/1 pkg crackers; Chili con carne w/1 pkg crackers; Entree: Baked haddock in creole sauce; Pizza slice; Vegetable dejour; Whipped potatoes.

"LUNCHEON NOTES" ENTERTAINMENT CONTINUES...For a mid-day break, don't miss the April "Luncheon Notes" series continuing on Thursdays at 12:30 p.m. in the Hall of Governors. On the 16th, the GSU String Quartet will give a short concert and on April 23, selected piano pieces will be performed by **Gerl Niwranski** and **Donna Lowe (FA)**. All performances are free and open to the public.



ALUMNI ASSOCIATION TO SPONSOR DOCTORAL SEMINAR...An opportunity to examine the external Ph.D. and Ed.D. programs of Union Graduate School and Nova University will be provided in the External Doctoral Seminar being held on Saturday, April 25 at 9 a.m. in the GSU Theatre. Both the Union and Nova programs are fully accredited. Representatives from both schools will outline degree programs, admissions and degree requirements, costs, etc. The fee for this seminar is \$5 for Alumni Association members and \$10 for alumni non-members. Reservations are on a first-come, first-served basis. Questions should be directed to the Alumni Office at 534-5000, extension 2215.

PUT AWAY YOUR KNIFE AND FORK...Inscapes goofed. The President's Concert scheduled for May 13 has been changed to May 14 and will be followed by a catered reception not a catered dinner as published in the last issue of Inscapes.

CIVIL SERVICE SENATE ELECTION...Balloting for the Civil Service Senate election will be held throughout two working days—April 21 and 22—with the booth open from 10 a.m. to 6:30 p.m. Results will be announced on May 21. The Civil Service Senate has the responsibility to advise and make recommendations on university policies and to address other activities and concerns directly affecting all civil service employees.

CBPA INTERNSHIP PROGRAM PROVIDES HANDS-ON EXPERIENCE...Three CBPA students, **Laura Baxter, Traci Adams and Andrew Biedron** helped to lighten the income tax burden for R & B Tax Accounting this winter trimester when they served as student interns for the firm. The program, organized by **Dr. Paul O'Brien** (CBPA), enabled the students to get hands-on experience with new computer systems that allow tax accountants to file forms without the traditional paperwork. It also gave them experience working with clients.

"In many tax accounting firms, normally new employees and interns, don't have client contact the first year. Our students are getting that in the first month," **Dr. O'Brien** explained.

"This pilot program is giving our students an immediate one-on-one relationship with the client. It's putting them into the 'real' world.

"Internships give our students a chance to get out into the working world and know what they're learning is essential and valuable," **Dr. O'Brien** said. "It is also an important way for the business community to become familiar with GSU students and recognize the kind of education we're offering here."

BOOKSTORE SCHEDULE

April 20-24	MON-THURS FRIDAY	10 a.m. -7:30 p.m. 10 a.m. -3 p.m.
April 27-May 2	MONDAY TUES-WED THURSDAY FRIDAY SATURDAY	10 a.m. -5 p.m. 10 a.m. -7:30 p.m. 10 a.m. -5 p.m. 10 a.m.-3 p.m. 10 a.m. -1 p.m.

"TAKE A TEACHER TO LUNCH"...On April 30 teachers will be given the chance to develop new ideas for presenting economics in the classroom at the fifth annual Take a Teacher to Lunch seminar. The program, titled "Economic Change and Career Opportunities— Preparing Students for the Certainty of Uncertainty," will be given from 8:15 a.m. to 1:30 p.m. at the Matteson Holiday Inn. The four speakers for the day's events will cover a variety of topics designed to give teachers new ideas on economic issues, rather than developing lessons, **Dr. John Morton** (OEE), said.

Teachers interested in attending this program are asked to register with **Kay Schebler** (OEE) at (312) 534-5000, extension 2141. There will be a \$25 fee for both the seminar and luncheon or a \$15 fee for the luncheon only. This program is also open to the business community.

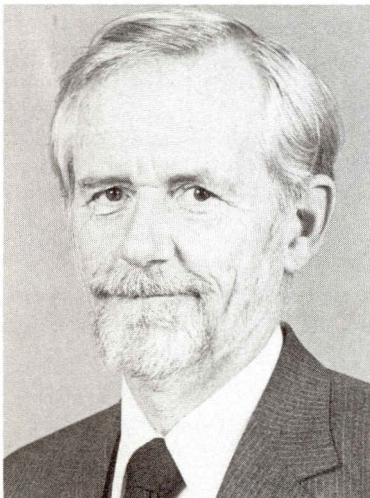
ROGGE—INPUT VALUED AT GSU..."While I've been a part of many changes at GSU since I started working here in 1974, teacher has been my most important role," **Dr. William Rogge** says. "I've found this an exciting place to work."

Rogge, a professor of psychology and counseling in the College of Education, has been president of the Faculty Senate the last three years, and before that served as an active member of the senate giving input into major changes at GSU. For example, it was the Faculty Senate that recommended GSU change from a non- grade to a grading system, that it institute basic math and writing competencies for incoming students, and that a thesis be required for master's degree candidates. "While the Faculty Senate is only a recommending body, we give valuable advice," Rogge says.

Before joining the GSU faculty, Rogge held a variety of positions on the state and federal level, including developing and directing gifted children's programs for the U.S. Office of Education. "Attention to this program started after Sputnik," he recalls. As director of one of 20 labs for the U.S. Office of Education, Rogge helped develop teacher training programs for gifted students, and revised curriculums.

One of Rogge's biggest challenges was heading a school in Bolingbrook during the city's "boom town" era. He helped develop a year-round school program that incorporated team-teaching and the open classroom concept. The experimental program, done in cooperation with the Illinois Board of Education, the University of Illinois and the local school district, led to many innovations. Some are still being used.

Rogge, a Park Forest resident, has been teaching students who are preparing to be school counselors, school psychologists and general counselors working with young people in such programs as drug and alcohol rehabilitation. He is also a GSU TV "personality" giving "Test and Measurement" lectures for GSU teleclasses.



Dr. William Rogge