

**Governors State University**  
**OPUS Open Portal to University Scholarship**

---

F.Y.I.

University Newsletters

---

2-28-1996

F.Y.I., 1996-02-28

Office of Public Affairs

Follow this and additional works at: <http://opus.govst.edu/fyi>

---

**Recommended Citation**

Governors State University Office of Public Affairs, F.Y.I. (1996, February 28). <http://opus.govst.edu/fyi/137>

This Newsletter is brought to you for free and open access by the University Newsletters at OPUS Open Portal to University Scholarship. It has been accepted for inclusion in F.Y.I. by an authorized administrator of OPUS Open Portal to University Scholarship. For more information, please contact [opus@govst.edu](mailto:opus@govst.edu).

## Happenings at GSU

- 3/5 **Dr. Bertice Berry**, syndicated talk show host, gives a humor-filled lecture, 7 p.m.
- 3/6 "Cotton Patch Gospel," bluegrass musical about the life of Jesus, 1 and 8 p.m., The Center for Arts and Technology.
- 3/8 "Mahalia," a musical on the life of gospel singer Mahalia Jackson, 8 p.m., The Center for Arts and Technology.
- 3/9 Open Space Congress for the South Region follow-up meeting, 9 to 11:30 a.m.
- 3/9 "Stars and Nebulas" workshop, & 16 9 a.m. to 4:30 p.m.
- 3/11 **Dr. Corla Hawkins** addresses her role in helping Chicago's "discarded" children, 6:30 p.m.
- 3/13 Board of Governors Bachelor of Arts degree program informational session, 6 to 7 p.m.
- 3/16 College of Education career fair for teachers, school administrators, counseling students, school psychologists and social workers, 10 a.m. to 3 p.m.
- 3/17 Chicago Chamber Musicians perform works of Mozart, Dvorak and Stravinsky, 1:30 p.m., The Center for Arts and Technology.
- 3/18 **Addie Wyatt** outlines her work as a community and union activist, 7 p.m.
- 3/22 "Grant Writing" workshop, -23 9 a.m. to 5 p.m.
- 3/23 "Black Holes, Quasars and the & 30 Universe" workshop, 9 a.m. to 4:30 p.m.
- 3/28 Award-winning journalist **Maria Hinojosa** speaks on "Being True to Your Voice: Empowerment for Latinos and Women," 7 p.m.

## Electronic GSU sketch available via multi-media WWW home page

BY MARILYN THOMAS

It's a jungle out there on the World Wide Web, but Governors State University is offering a bit of solace through its creative and informative home page.

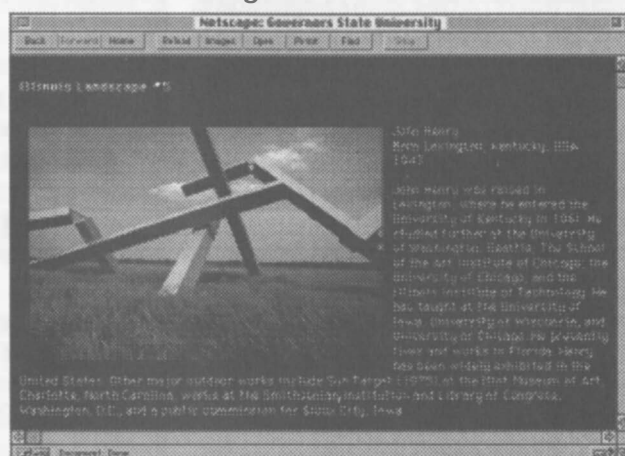
When you look up <http://www.govst.edu> on the Internet, you'll find GSU's home page offers a grand tour in a multi-media package that includes everything from movie clips of students and faculty, to a feel for the wind on the prairie in the Nathan Manilow Sculpture Park on the 750-acre campus in University Park.

Putting information about academia out on the Internet

isn't hard, but making it interesting takes someone creative, like GSU's art professor **Jay Boersma** who designed the university's home page.

"It's friendly," he stresses. "It's approachable. It talks to students as real human beings."

He has sprinkled it with color photos, facts, tidbits about students, faculty and activities on campus, and with occasional humor (check out the



**Graphics are a major part of the GSU home page, including descriptions and presentations of the 22 outdoor sculptures in the Nathan Manilow Sculpture Park like John Henry's "Illinois Landscape No. 5" shown here.**

(continued on page 2)

## GSU debuts 'Issues and Impact' as new cable public dialog program

"Issues and Impact," a new half-hour program produced by Governors State University, is airing over Jones Intercable.

This provocative program offers viewpoints from a variety of guests discussing a wide range of topics. The program is available to cable subscribers in Crete, Flossmoor, Hazel Crest, Lansing, Matteson, Richton Park, Park Forest, University Park, and rural areas in Will County. Viewers can watch the program at 1 or 9 p.m., or at 5 a.m. on Mondays, Wednesdays, Fridays, Saturdays and Sundays. Initially, GSU will open with four programs which will be repeated in a cycle.

"This program is one way for Governors State University to break down the (continued on page 3)

## GSU sends electronic news via home page

(continued from page 1)

"large grill" sculpture).

The GSU home page isn't just facts and figures. It does spell out the university's general information on student population, faculty successes, bachelor's and master's degree offerings and tuition but in narrative that presents itself in a "personal" style.

Other universities' home pages don't also offer you a walking tour of 21 outdoor sculptures or a line-up of stars on its performing arts stage.

The Governors State home page also offers variety through links to other sites with information pertinent to GSU. Boersma also designed simple click methods to get users back to the previous page or the GSU starting point.

Creating the home page was a challenge for Boersma, the photography and art professor who has retrained in the use of computers for graphics and photo manipulation. It took him several months to design the format and input the material, but he admits it was fun while it was educational.

"I'm someone who's up until late at night creating things on my computer. It's become both a vocation and an avocation," he says.

---

### Governors State University F.Y.I.

is published by

Office of Public Affairs  
Governors State University  
University Park, IL 60466  
(708) 534-4567

Director of Public Affairs

Constance Zonka

Coordinator of University Publications

Virginia Eysenbach

Coordinator of Public Information

Marilyn Thomas

---

## Wayne Hamilton 1939-1996

The period of mourning has passed, but the void left by the sudden death of Governors State University Provost Wayne Hamilton on Jan. 29 will be difficult to fill.

Hamilton, 56, died after suffering a massive heart attack while on campus.

Although he was a member of the administrative team for only 16 months, Dr. Hamilton left his imprint on the university in many ways.

Members of the staff gathered after his death to relate many fond memories

of the provost who was remembered as a "mega force," someone with "a clear sense of connectedness," and "a dreamer ... who elevated GSU to a different level of thinking, a different level of community."

Many recalled his intense interest in the GSU community's need to work together. He let those around him know the importance of civility, and Professor Bob Press remembered Hamilton for his work to create an atmosphere where "people counted more than things."

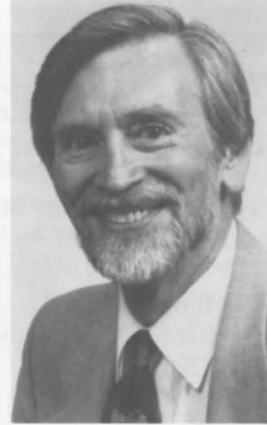
"His being here made an incredible difference to the university and his not being here will also make an incredible difference," President Paula Wolff said. "His subtle sense of humor, his genuine love of learning, his interest and capacity to reach out to include all members of the GSU community — especially faculty — in decision making and his unwavering commitment to academic excellence will be sorely missed.

"A gentleman, a true philosopher — a seeker of truth, a loyal friend and caring leader, Wayne was an enormous addition to GSU," she added.

Dr. Hamilton came to Governors State in August 1994, as provost and vice president of academic affairs. He was responsible for all faculty and curriculum decisions on campus.

He had won praise from colleagues for his genuine, calm and thoughtful approaches to learning.

"I found him personally to be a very wonderful, honorable, compassionate person. He was the epitome of a scholar, and it was so wonderful to have a true scholar as a provost. He cared for the faculty, and was greatly admired," said Dr. Maribeth



Wayne Hamilton

Montgomery Kasik, president of the faculty union, the University Professionals of Illinois.

Before coming to GSU, Dr. Hamilton had been dean of graduate and continuing studies at Westfield State College where he had served from 1989 until his 1994 appointment at GSU. He also had been dean of instruction at Ulster County Community College from 1986 to 1989, director of degree programs in the liberal arts at New York University from 1983 to 1986, and director of humanities at the University of Maryland University College and assistant director of the International University Consortium. He has been on the faculty of the University of Maryland, the University of Findlay in Ohio, The George Washington University in Washington, D.C., New York University and the State University of New York system.

He is survived by his wife, Karen Brown, four daughters, Vanessa, Angela and Jocelyn Hamilton and Nicole Hamilton-Armitage, and his mother, Paula Hamilton.

Memorials can be made to the GSU Foundation scholarship fund or to Westfield State College scholarships.

(Student Eileen Truszkowski contributed to this story.)

## Women's '96 work highlighted in March programs

Women's roles in today's society have become extremely diversified. How women personally and professionally meet the challenges will be highlighted in March presentations given in celebration of "Women's History Month."

Opening the program will be **Dr. Bertice Berry**, host of her own nationally syndicated talk show "The Bertice Berry Show" on the FOX Television Network. She is best known as the comedienne with the doctorate. Berry delivers inspirational and motivating lectures packed with humor. Her presentation will be at 7 p.m. March 5.

**Dr. Corla Hawkins**, a Chicago educator who has dedicated herself to caring and educating the "discarded" children, will offer insights into her work and progress at a 6:30 p.m. program March 11 in the Hall of Honors.

### Smith receives \$1,000 award

The Leo and Margaret Goodman-Malamuth Endowed Scholarship in Media Communication Technologies has been awarded to Governors State University graduate student **Yolanda Santoyo Smith**. She is the first recipient of the \$1,000 award established by GSU's second president and his late wife.

Smith returned to college after having worked as a designer and artist for both Fortune 500 companies and small businesses. Her major emphasis is to keep up with new technologies while still using her arts skills.

"Having always worked in the arts, I feel that design, whether graphic, environmental, industrial or interior is influenced by the media: the television, the computer and now the information highway," Smith said.

During the 1994-95 academic year, Smith was one of a four-member team that explained propaganda of the 1940s and 1950s in developing a thesis project. Smith said the work gave her new perspectives on message packaging and propaganda presentation.

**Marilyn Yirku**, president of Jay Mar Training Services, will offer a 1 to 4 p.m. workshop March 14 on women's empowerment and communication skills. She has more than 20 years of corporate and academic training experience, and for 10 years she was a manager for AT&T training district personnel throughout a 10-state region.

At 7 p.m. March 18, **Addie Wyatt** will outline her work as a community and union activist.

Concluding the month-long celebration will be National Public Radio's **Maria Hinojosa**, host of "Latino USA," a weekly program of news and culture by and about Latinos. Her presentation "Being True to Your Voice: Empowerment for Latinos and

Women" will be given at 7 p.m. March 28 on campus.

The award-winning journalist received national recognition for her investigative story "Crews," that documented the lives of Latino gang members. She has since written a book titled *Crews* based on her hundreds of hours of interviews on the subject.

She also has won awards for her stories on a body bag factory aired during the Gulf War, a documentary about women and AIDS in Puerto Rico, and "Kids and Guns," a story that received the New York Society of Professional Journalists Award.

She also is a regular contributor to WNBC-TV's "Visiones" program and a guest on "CNN and Company."

## TV show delves in to issues

(continued from page 1)

'Ivory Tower' and to share with the region ideas and insights from the university," said Governors State University President **Paula Wolff**, who is hosting the programs. "We hope it will provide a stimulus for community conversation and action on pertinent and timely issues."

The opening "Issues and Impact" program, "Women and AIDS," is a lively format giving the viewer a picture of the problem and information to decide what can be done.

One-on-one conversations with women who have Acquired Immune Deficiency Syndrome (AIDS) help viewers better understand the problems the women face, and a round table discussion with leading experts provides insights into the public's perception, medical implications and care.

Another show features the examination of chaotic organizations by **Dee Hock**, former president of VISA Corporation who revolutionized the industry by establishing a new, evolving organization (VISA) that gave its power to its members rather than a board and managers. He is joined by GSU professors for this discussion.

Hock argues our current management structures, from government

down to businesses and schools, are failing and offers his insights into how his ideas can lead to new nonlinear, seamless organizations.

Another "Issues and Impact" program examines south metropolitan regional issues, including perception, race relations, jobs, a third airport proposal and housing. The lively panel includes **Sen. Aldo DeAngelis** (R-Olympia Fields); **Irene Brodie**, mayor of the Village of Robbins; **Phil Jurik**, a reporter for *The Daily Southtown*; **John Racich** of First Midwest Bank in Joliet; and **Ron Bean**, director of the Regional Action Project/2000+ (RAP/2000+) answering questions from leaders of downtown civic organizations who came to tour the south suburbs under the auspices of the South Metropolitan Regional Leadership Center and RAP/2000+.

How "managed care" organizations are changing the health care scene is examined by GSU **Professor Arthur Durant** and **Terence Gorski**, president of CENAPS Corp. Together they examine cost containment, patient analysis and care provisions, and consider how changes in the health care industry are working for the public and for health care providers.

# Presidential predictions put professor in spotlight

BY MARILYN THOMAS

With the presidential race in full swing, **Dr. Paul Green** peered into his crystal ball to make a prediction: "The party with the least controversy wins."

The Governors State University professor of public administration and director of The Institute for Public Policy and Administration said, "Political conventions now are show-time for a united front," but the Republicans can't get their act together until they have a candidate, and even then, the party is split on its positions because of the Christian Right and other conservative groups, and major issues, such as abortion.

"**Bob Dole** literally can not drive in England," Dr. Green quipped, referring to the British model of driving on the left-hand side of the road. "Dole has to stay as far right as possible" until he is the clear favorite from the primaries and caucuses.

"**Pat Buchanan** is the **Jesse Jackson** of the Republican Party. In order to win the GOP nomination, he must expand significantly his hard-core base — something Jackson was unable to do in his 1984 and 1988 runs for the Democratic Party nomination," the professor said.

**President Clinton** has no opposition and he is "far stronger than I thought he was six months ago. As of now, it's Clinton's to lose," the professor said. "Once Bill Clinton leaves

governing and goes to campaigning, he becomes one tough hombre."

But he hedged on giving his blessing to the Democrats saying much can change between now and the November general election.



Paul Green

Dr. Green, a nationally recognized analyst of political parties and strategies, went through his litany of do's and don'ts for the candidates during a presentation on the GSU campus. He reminded his audience that the populist vote is only a part of the election process. It will be a hard-fought race so that the candidates can capture enough votes to win in the Electoral College.

President Clinton won the 1992 election by breaking the Republican lock on the south and painting incumbent **President George Bush** as an unpopular president. That swung California for Clinton, giving him one-fifth of the Electoral College votes. "That's why he's constantly California dreamin'," the professor said in his play on the title of the 1960s hit song.

California again will be a state to watch, Dr. Green predicts, and it may come down to a vice presidential

nomination for California's Gov. **Pete Wilson** if the Republican Party's standard-bearer wants a victory.

Dr. Green said the governors of Ohio, Michigan and Wisconsin also should be closely watched. If Republicans lose to President Clinton, then one of these governors will seek the nomination in 2000, he believes.

House Speaker **Newt Gingrich** probably would be comfortable with a Clinton victory "because he'll be the GOP spokesperson for the next four years," Dr. Green said.

Changing demographics are putting new emphasis on the south and southwest, and on suburban America.

Middle ground is so important, the professor stressed, because middle Americans vote. A statistical analysis of voters between 1976 and 1992 shows 87 percent of white Americans voting. The largest voting bloc is the 30- to 59-year-olds with incomes of between \$30,000 and \$75,000. Women have outpaced men at the voting booth 54 to 46 percent.

"This is why the middle is always best," the professor points out. "Philosophical issues, age and income all point to the middle of America."

"Lastly, given a hotly contested three-way fight for the GOP nomination, Illinois' March 19 primary may be 'the moment of truth' for the leading candidates."



Governors  
State  
University

OFFICE OF UNIVERSITY RELATIONS  
UNIVERSITY PARK, IL 60466

Nonprofit  
Organization  
U.S. Postage  
PAID

Park Forest, IL 60466  
Permit No. 178



A selection  
of internal news items  
of interest to the GSU staff.

f.y.i.

# inside governors state university

FEBRUARY 28, 1996



## News Flash

### Volunteers credited with helping Alumni Phonathon break record

ENGBRETSON HALL (March 10) — Phonathon '96 headquarters

Every bell is rung and shouts of jubilation echo through this room jammed with volunteers as the 1996 fundraiser's \$125,000 goal is met by the end of opening night. The successes of the dozens of volunteers have brought in alumni support from every region of the United States with pledges of \$100, \$500 and even \$1,000.

This is a first in Governors State University Alumni history, but **Ginni Burghardt**, director of alumni relations, promises greater things for next year. "Our supporters are loyal to Governors State, and they will double their pledges in 1997."

She already is accepting calls from other universities asking for her recipe for success.

**REALITY CHECK:** *This is a dream, and to date it is only a dream, of the GSU Alumni Association.*

The truth is that the success of the Governors State University Alumni Association Phonathon does depend on you. The four hours you volunteer could add up to \$1,000 or more in pledges toward the 1996 goal of \$125,000.

The phonathon this year begins Sunday, March 10, and continues through Wednesday, April 3. All volunteers get dinner followed by instructions on phonathon solicitation. Then callers begin dialing alumni for renewals and new pledges.

"GSU has more than 20,000 alumni now. We have gotten some pledges from our mail solicitation, but we still have thousands we want to reach by phone,"

Burghardt explained. "This is the crucial fundraising period for us, and volunteers are always needed.

"We call Sundays through Fridays. We think that offers flexibility to those who can't spare too much time, but can give one night, or several nights, for GSU."

The 1995 goal of \$100,000 in alumni gifts was surpassed when all donations and corporate and matching gifts came in. "We collected more than \$145,000," Burghardt said. "That's why we set our goal at \$125,000 in alumni gifts this year. We know alumni are willing to give back to Governors State if we ask."

Once again, the alumni association will be underwriting a friendly wager among departments to see which one can solicit the most volunteers. The winning department gets a cash prize and the infamous "Alumni Piggy-Bank."

If you'd like to volunteer as a team or as an individual, call the alumni office at extension 4128.

### March book sale

Award-winning books for pre-school through eighth grade readers will be on sale from 10:30 a.m. to 5 p.m. March 11 through 15 in the Hall of Governors. This is a Child-Care Center benefit.

### PEP workshop set

"Eating Well, Feeling Better" will be the topic for the next PEP workshop offered from 10 a.m. to 1 p.m. April 3 in the Hall of Honors. Reservations are being accepted by the Human Resources Office on extension 5308.

### Cruz working as GSU's liaison for community colleges, students

Governors State University has selected **Cynthia Cruz** to serve as its liaison between GSU and community college students and administrators.

In her position as coordinator of community college relations, she will be responsible for working with community college administrators, counselors, transfer center staff and faculty to facilitate transfer activities of students.

Cruz also will be developing and updating course and program articulation agreements, representing Governors State at various functions, and preparing transfer student follow-up data and statistical reports for community colleges.

"We are pleased to have Cynthia Cruz join us at Governors State. She brings a solid background in community college relations and a strong knowledge of what transfer students want and need," said GSU **President Paula Wolff**. "She will be a wonderful addition to our staff, and a great liaison between GSU and our regional community colleges. Between July 1993 and January 1996, Cruz worked at the University of Chicago in two capacities — as assistant director in the college admissions office, and later transfer coordinator for the office."

In those positions, she was the



Cynthia Cruz

(continued on page 2)

## Employee of the Month

### Product depends on Herman's skill

BY MARLYN THOMAS

Ed Herman's the University Print Shop guy responsible for making your finished product presentable.

That last step, the final touch, so to speak, makes Herman's work essential to just about every project that goes through the shop.

If your print shop job is stapled, bound, or folded, if it requires that holes be drilled for three-ring folders, or you require specialty binders, Herman's been responsible.

And to those who would say stapling to paper or spiral binding syllabi doesn't sound fancy, the crew at the Print Shop would suggest that you'd change your mind if you had to do without his efforts.

"Ed makes a significant contribution by doing his job in an efficient and dependable manner," co-worker George Vesvardes said in his nomination. "Ed will offer suggestions that help us run a more efficient shop. He has an ability to learn quickly, and that

in turn helps him do his job in an exceptional manner."

Herman started at GSU nine years ago as a mail delivery person. He worked in that position for two years. It was when Vesvardes was promoted that Herman transferred to the print shop.

"It was George who taught me all these different bindery jobs. I enjoy what I'm doing because I know how essential it is to someone's project, and I have lots of jobs to keep me busy," Herman adds.

Because Herman is willing to "do whatever it takes to get the job done," he has become a kind of jack of all trades, Vesvardes wrote. For Herman that means everything from stepping in on printing jobs when needed to doing repairs to keep the aging machinery going.

Herman says he got a special bonus for working at the print shop. Co-worker Barb Basler introduced him to his wife, Gail. The couple, married in summer 1995, live in Momence.



Ed Herman

## *Cruz takes on GSU/college relations*

(continued from page 1)

liaison with community colleges in the Chicago area and in the southwestern United States. She would advise prospective transfer students, in particular Latino students, on admission criteria, evaluate applications and work with the Financial Aid Office on their behalf.

From January 1989 to July 1993, Cruz worked at the Chicago satellite office of the University of Illinois at Urbana-Champaign. Her duties included recruiting Chicago students, involving U of I deans and faculty in visits with school counselors, and developing and organizing student

home visit programs and campus visits to UTUC.

Cruz is a member of the Illinois Association of College Admissions Counselors, and now is co-chairing the Chicago National College Fair planning committee sponsored by the National Association of College Admissions Counselors.

The Alsip resident received a bachelor's degree in sociology from the University of Illinois at Urbana-Champaign, and a master's degree in education from the University of Illinois at Chicago.

## Cafeteria menu

DAILY—Pizza; baked potato bar.

(Week of March 4-8)

**Monday**—Ham and cheese on croissant, hash browns. Chicken Confetti soup, chili; Philly steak, fries or soup; beef & bean chimichanga, refried beans; grilled chicken Caesar salad.

**Tuesday**—Eggs, bacon or sausage, hash browns, toast. Split pea soup, chili; bacon cheeseburger, fries or soup; chicken a la king over biscuit, roll; stir fry, assorted fresh vegetables.

**Wednesday**—Pancakes, bacon or sausage. Chicken noodle soup, chili; grilled turkey and Swiss on roll, fries or soup; spinach lasagna, tossed salad, garlic bread; taco salad.

**Thursday**—Cheese omelet, hash browns, toast. Cream of spinach soup, chili; BLT sandwich, fries or soup; baked chicken breast, rice, vegetable; fresh pasta.

**Friday**—Ham and cheese omelet, toast, hash browns. Beef noodle vegetable soup, chili; French dip sandwich, fries or soup; sauteed perch filet, macaroni and cheese, vegetable, roll.

(Week of March 11-15)

**Monday**—Sausage and egg biscuit. Chicken vegetable soup, chili; tuna melt, fries or soup; tuna casserole with roll; stir fry with vegetables.

**Tuesday**—Pancakes with sausage or bacon. Tortellini soup, chili; double cheeseburger, fries or soup; quarter baked chicken, rice or potatoes, vegetable, roll; pasta.

**Wednesday**—Egg, ham and cheese on English muffin. Cream of broccoli soup, chili; grilled chicken breast sandwich, fries or soup; carved pork roast, fettuccine Alfredo, vegetable, roll; taco salad, Spanish rice.

**Thursday**—Egg, bacon and cheese on croissant. Cream of potato soup, chili; Italian beef sandwich, fries or soup; beef fajitas, vegetable; grilled chicken Caesar salad.

**Friday**—Ham, egg and cheese on croissant. Tomato rice soup, chili; grilled ham and cheese sandwich; catfish nuggets, macaroni and cheese or fries, vegetable, roll.

## Alumni award 51 faculty development awards

The Governors State University Alumni Association has made its annual monetary presentations in support of faculty research and activities.

The \$30,000 was distributed as Professional Development Awards to 51 faculty for support of research, travel or other professionally related purposes, including equipment and/or commodities for the 1995-96 academic year. Selections were made by the Professional Development Awards Committee — **Dean Cecilia Rokusek (CHP)**, **Dr. Sonny Goldenstein (CAS)**, **Dr. Ami Wang (CHP)**, **Dr. Joseph Addison (CAS)**, **Dr. Judy Cooney (CE)**, **Dr. Bill Wilkinson (CBPA)** and **Professor Tony Labriola (CS)**.

Most professors used the funding to cover travel costs to professional conferences. Others used the award for equipment purchases.

**Dr. David Matteson (CE)** attended the American Psychological Association national meeting where he presented a paper.

**Dr. Linda Buyer (CE)** attended the Society for Computers in Psychology and the Psychonomic Society conference in Los Angeles where she presented a paper.

**Dr. Annie Lawrence (CHP)** attended the "Advancing the Practice of

Teaching" Council in Nursing Education annual meeting in San Antonio.

**Professor Steve Shih (CAS)** attended the Netware User Conference in Chicago.

**Professor Susanne Hildebrand, Dr. Jay Lubinsky and Dr. John Lowe (CHP)** attended the American Speech-Language-Hearing Association meeting in Orlando, Fla.

**Professor Joan Downs, Drs. Barbara Jenkins, Diane Kjos, Lon Wolff and Sandra Whitaker (CE)** attended the Evolution of Psychotherapy Conference in Las Vegas.

**Dr. Michael Purdy (CAS)** attended the Speech Communication Association annual conference in San Antonio.

**Dr. John Meyer (CE)** will attend the 7th International Conference of the Society for Information Technology and Teacher Education in Phoenix in March.

**Professor Jacqueline Kilpatrick (CAS)** attended the Conference on College Composition and Communication, Winter Workshop, in Clearwater Beach, Fla.

**Dr. Joanne Anania (CE)** will attend the 41st Annual Convention of the International Reading Association in New Orleans April 28-May 3 where she will present a paper.

**Professor Constance Edwards (CHP)** attended the Sigma Theta Tau International Convention in Detroit.

**Dr. Frances Kostarelos (CAS)** used her award for a portion of the cost of a laptop computer she will use in field research and course development.

**Professor Robert Press (CE)** attended the Illinois Association of Teacher Educators meetings.

**Professor Cecilia Myrick (CE)** attended the National Reading Conference in Charleston, S.C., where she presented a paper.

**Dr. Karen Peterson (CE)** attended the regional training on Teacher Performance Assessment offered through Pathwise Institute of the Educational Testing Service.

**Professor Damon Krug (CE)** will attend a symposium at the American Educational Research Association in New York in April where he will co-chair the program.

**Professors Diane Dates Casey, Barbara Conant, Ann Glascoff, Mari Ellen Leverence, Lydia Morrow, Nancy Shlaes and Beth Hansen Shaw (UL)** attended the American Library Association's midwinter meeting in San Antonio.

**Dr. Jagan Lingamneni (CAS)** will attend the 1996 Academy of Criminal Justice Sciences annual meeting in Las Vegas where he will present a paper.

**Dr. Joseph Addison (CAS)** used the award to purchase a scanner for his research work.

**Dr. Linda Proudfit (CE)** attended the Annual Conference of the Ohio Council of Teachers of Mathematics in Cleveland where she presented a workshop.

**Dr. Gregory Blevins (CHP)** will attend the International Coalition of Addiction Studies Educators Conference convention in Denver.

**Dr. Marsha Katz (CBPA)** attended the International Colloquium in Human Resource Management in Montpellier, France, where she presented a paper.

**Dr. Ginger Kosmoski (CE)** will

## Civil Service Day program March 22

The Civil Service staff will have its day of recognition on March 22 when the annual "Civil Service Day" celebration is held from 10 a.m. to 4 p.m.

The program, in Sherman Music Recital Hall, will open at 10 a.m. with a talent show followed by a fashion show.

Models of favorite fashions are needed. Share your special times with those great outfits from the 1960s, '70s, '80s and '90s. Each department is asked to have at least one person participate in the fashion show.

At noon, lunch will be served in the Hall of Governors.

Bingo games and line dancing will be the afternoon entertainment in the

Hall of Honors.

On Civil Service Day, the senate also will be raffling off 10 gift certificates to Best Buy that were given by **Ginni Burghardt**, director of alumni relations. Proceeds will benefit the Civil Service Scholarship Fund. Tickets will be sold until 10 a.m. Civil Service Day.

Working on this year's event are Civil Service Affairs Committee members **LouElla Rozier**, program chairperson, **Jeanne Costa (BO)**, **Alice Gardner (REG)**, **LaVette Callahan (CHP)**, **Barbara Lane (BO)**, **Janet Worsham (UL)** and **Dorothy Sanders (DPS)**.

(continued on page 4)



## Faculty selected for alumni awards

(continued from page 3)

attend the National Convention of the American Association of School Administrators in San Diego in March where she will present a paper.

**Professor Jay Boersma (CAS)** used the award to cover costs of a digital camera for multiple purposes including research, teaching and World Wide Web page creation.

**Dr. David Prasse (CE)** will attend the National Association of School Psychologists conference in March where he will present a paper.

**Dr. Deborah Holdstein (CAS)** will attend the Conference on College Composition and Communication in March when she will present three papers.

**Professor James Massey (CHP)** will attend the American College of Healthcare Executives conference in May.

**Dr. Carlos Rodriguez (CBPA)** will attend the Business Association for Latin American Studies Conference in Mexico in March where he will present a paper.

**Dr. Shelly Kumar (CAS)** used the award to help fund a Macintosh notebook for his research and development projects.

**Dr. Mel Muchnik (CAS)** will attend the International Program Committee of the Second International Distance Education Conference in Russia in July.

**Professor Teresa Barrios-Aulet (CAS)** will attend seminars and roundtables in Brazil as part of an

ongoing research project.

**Dr. Peter Gunther (CAS)** used the award to upgrade and modify scientific equipment in the labs for his plant research.

**Dr. Hugh Rank (CAS)** attended the Key West Literary Seminar: "American Writers and the Natural World."

**Dr. David Parmenter (CBPA)** will attend the American Production and Inventory Control Society conference in Denver in July.

**Professor Mary Bookwalter (CAS)** used her award to support an art research project which involves a collaborative approach to visual art and the written word.

**Professor Eli Segal (CAS)** will attend a film convention in Columbus, Ohio, in May.

**Dr. Jon Carlson (CE)** will attend the Family Therapy Networker symposium in Washington in March.

**Dr. Cheryl Mroz (CHP)** will attend the 10th Biennial International Conference on Infant Studies in Providence, R.I., in April.

**Dr. Sonny Goldenstein (CAS)** will attend the annual meeting of the Academy of Criminal Justice Sciences in Las Vegas in March.

## Staff changes

*New employees*—**Thelma J. Tartt (CAS)**, secretary, liberal arts; **Joni Williamson (UL)**, clerk; **Robert L. Hill (PPO)**, building service worker; **Gail Mosier (Admissions)**, secretary; **Janet Engle (CHP)**, special projects manager; **Carolyn Stokes (Provost Office)**, research associate; **Kevin Wren (PPO)**, plant operating engineer; **Janice Griffin (IS)**, telephone operator; **Tabirih Phillips (IS)**, research associate; **Armando Juarez (DSP)**, police officer; **Rad Alrifai (CAS)**, university lecturer in science division; **Larry Noyes (CBPA)**, university lecturer in management.

*Leaving*—**Christine Alvarado (SD)**, job locator.

*Transferred*—**Raji Nair** from Admissions to Information Services.

## GSUings

**Dr. Deborah Holdstein (CAS)**, presenting the lecture "Writing My Mother's Life" at the Park Forest Public Library Jan. 11...**President Paula Wolff**, being elected in January to a three-year term as a director of the Chicago Southland Chamber of Commerce...**Polly Bernd (CELCS)**, being re-elected chairperson, and **Christine Cochrane (SBDC)**, being elected secretary of the Eastern Will County Regional Council...**Drs. Lon Wolf, David Matteson and Diane Kjos (CE)**, with adjunct professor **Maureen Genevich**, attending "The Evolution of Psychotherapy" conference in Las Vegas in December...**Dr. Paul Green (CBPA)**, addressing the Illinois Valley Community College Honors Program on "The Chicago Political Tradition" Dec. 13 and being a guest on WBEZ-Radio's "Talk of the City" program Dec. 18 discussing the federal budget crisis...**Dr. Shelly Kumar (CAS)**, presenting a seminar, "Fullerene Chemistry", as an invited speaker at Valparaiso University in October... **Professor Diane Casey (UL)**, being appointed to a one-year term as chair of the Subject Analysis Committee (SAC) of the American Library Association and attending the American Library Association Midwinter Conference in San Antonio where she chaired the Subcommittee on Subject Authority File Recommendations and served as secretary to SAC... **Dr. Winfried K. Rudloff (CAS)**, attending the International Conference on Interdisciplinary Research in Carlsbad-Karlovy Vary, Czech Republic, where he presented a multimedia-supported keynote lecture on "Electronic University without Borders: A Pilot Program in Interactive Global Education," and chairing two symposia on education, and attending the 1995 Symposium on Systems Research, Informatics and Cybernetics in Baden-Baden, Germany, where he presented the plenary lecture on "Implementation of a Multi-Lingual Universal Knowledge Base."

### Get Well Wishes

To **Josie Fox (PPO)** who is recuperating from surgery. Greetings can be sent to her at 784-4 Delmar, University Park, IL 60466.

To **Dr. Efraim Gil (CBPA)** who is recuperating from surgery. Greetings can be sent to him at 9 Dunlap Rd., Park Forest, IL 60466.

To **Jack Fahey (PPO)** who is recovering from surgery. Cards can be sent to him at 819 Thomas Ave., Forest Park, IL 60130.