

Governors State University
OPUS Open Portal to University Scholarship

All Capstone Projects

Student Capstone Projects

Fall 2016

GSU Event Portal

Satyanarayana Mamidi
Governors State University

Chanda Mounika
Governors State University

Madhan Mohan Reddy Parkala
Governors State University

Akhila Vadhula
Governors State University

Follow this and additional works at: <http://opus.govst.edu/capstones>

 Part of the [Computer Sciences Commons](#)

Recommended Citation

Mamidi, Satyanarayana; Mounika, Chanda; Parkala, Madhan Mohan Reddy; and Vadhula, Akhila, "GSU Event Portal" (2016). *All Capstone Projects*. 267.
<http://opus.govst.edu/capstones/267>

For more information about the academic degree, extended learning, and certificate programs of Governors State University, go to http://www.govst.edu/Academics/Degree_Programs_and_Certifications/

Visit the [Governors State Computer Science Department](#)

This Project Summary is brought to you for free and open access by the Student Capstone Projects at OPUS Open Portal to University Scholarship. It has been accepted for inclusion in All Capstone Projects by an authorized administrator of OPUS Open Portal to University Scholarship. For more information, please contact opus@govst.edu.

ABSTRACT

The GSU EVENT PORTAL is website where you can advertise, view and make a booking for event by anywhere. You can do your necessary work related to events by this website just within few minutes. This application is trying to very easy for user to find venue by Google Map.

GSU Event Portal System is an online event management system that serves the functionality of an event manager. The system allows only registered users to login and new users are allowed to register on the application. The project provides most of the basic functionality required for an event. It allows the user to select from a list of event types. Once the user logged in and selects the event type.

Then system then allows the user to select the date and time of event and as well place of the event. All this data is stored in the database and the user is given a receipt for his booking. This data is then sent to the administrator (website owner) and they may interact with the client as per his requirements and his contact data stored in the database.

There are different modules in the project; main modules are administrator and user.

In administrator module there will be some sub modules like administrator can login and if he/she wants to view the updates then they can. And they can manage events and as well manage the place of an event and also he can give conformation mail to the user who is registered for any event from the website. In any case user forgot his password then administrator will provide new password to the user.

So in the user module if user wants to login then he can and the extra feature about this module is if user wants to create a new event then he can by his own. So all other users can register for the event provided by other user.

Table of Content

1	Project Description	1
1.1	Competitive Information	1
1.2	Relationship to Other Applications/Projects	1
1.3	Assumptions and Dependencies	1
1.4	Future Enhancements	1
2	Project Technical Description	1
2.1	Project/Application Architecture	2
2.2	Project/Application Information flows	2
2.3	Interactions with other Projects (if Any)	3
2.4	Interactions with other Applications	3
2.5	Capabilities	4
2.6	Risk Assessment and Management	4
3	Project Requirements	5
3.1	Identification of Requirements	5
3.2	Operations, Administration, Maintenance and Provisioning (OAM&P)	5
3.3	Security and Fraud Prevention	5
3.4	Release and Transition Plan	5
4	Project Internal/external Interface Impacts and Specification	5
4.1	Data Model Diagram	6
5	Project Design Units Impacts	7
5.1	Functional Area/Design Unit A	7
5.1.1	Functional Overview	7
5.1.2	Impacts	7
5.1.3	Requirements	7
5.2	Functional Area/Design Unit B	8
5.2.1	Functional Overview	8
5.2.2	Impacts	8
5.2.3	Requirements	8
5.3	Functional Area/Design Unit C	8
5.3.1	Functional Overview	8
5.3.2	Impacts	8
5.3.3	Requirements	8
5.4	Functional Area/Design Unit D	8
5.4.1	Functional Overview	8
5.4.2	Impacts	8
5.4.3	Requirements	8
5.5	Functional Area/Design Unit E	9
5.5.1	Functional Overview	9
5.5.2	Impacts	9
5.5.3	Requirements	9
5.6	Functional Area/Design Unit F	9
5.6.1	Functional Overview	9
5.6.2	Impacts	9
5.6.3	Requirements	9
5.7	Functional Area/Design Unit G	9

5.7.1 Functional Overview	9
5.7.2 Impacts	9
5.7.3 Requirements	9
5.8 Functional Area/Design Unit H.....	9
5.8.1 Functional Overview	9
5.8.2 Impacts	10
5.8.3 Requirements	10
5.9 Functional Area/Design Unit I.....	10
5.9.1 Functional Overview	10
5.9.2 Impacts	10
5.9.3 Requirements	10
5.10 Functional Area/Design Unit J.....	10
5.10.1 Functional Overview	10
5.10.2 Impacts	10
5.10.3 Requirements	10
5.11 Functional Area/Design Unit K.....	11
5.11.1 Functional Overview	11
5.11.2 Impacts	11
5.11.3 Requirements	11
5.12 Functional Area/Design Unit L.....	11
5.12.1 Functional Overview	11
5.12.2 Impacts	11
5.12.3 Requirements	11
5.13 Functional Area/Design Unit M.....	11
5.13.1 Functional Overview	11
5.13.2 Impacts	11
5.13.3 Requirements	11
6 Conclusion	12
7 Screenshots	12
8 Acknowledgements	17
9 References	17

1 Project Description

This website is very useful for advertising and other task related to events. It will allow users to make their account and publish their event advertisement, view other events and also making booking for that event. There are different types of categories for events and so many events related to those all categories. Website also has Google Map service to help user to get venue easily. There are two types of users website have Administrator and End User. Administrator has rights to add and modify category for event, active and deactivate of event advertisement and view booking details of event. End User has rights of view events of deferent categories, create and modify event advertisement, make booking for events.

1.1 Competitive Information

Peatix was easy to use and the customer service is incredible! They were a big part of the great success of TEDxLawrence! We owe thanks to Peatix

1.2 Relationship to Other Applications/Projects

Google Map Service has related by project. For which we generate API key to use it.

1.3 Assumptions and Dependencies

- User already has necessary knowledge to use it.
- For Run Properly user have internet access and necessary speed.
- Google Services used by this project is work properly.

1.4 Future Enhancements

- Online Payment for Ticket Booking
- Auto detects location and show events relate to it.

2 Project Technical Description

In this project HTML codes use for developing pages. Also we use Cascading Style Sheets (CSS) codes to every page for good look like. We use JavaScript for validation codes in pages where it's necessary.

C# .Net

C# is an elegant and type-safe object-oriented language that enables developers to build a wide range of secure and robust applications that run on .NET Framework. You can use C# to create traditional Windows client applications, XML Web services, distributed components, client-server applications, database applications, and much, much more. Microsoft Visual C# 2013 provides an advanced code editor, convenient user interface

designers, integrated debugger, and many other tools to facilitate rapid application development based on version 2.0 of the C# language and the .NET Framework.

SQL server

SQL Server is a client/server database system. The server runs the SQL Server database software, which processes requests submitted by the database client software and sends the results back to the client. The SQL Executive and the SQL Server Database Engine service are examples of database services performed by SQL Server. The SQL Server software is arranged in multiple layers. The Net-Library layer, which accepts connections from clients, hides the network connectivity details when a client communicates with a server running SQL Server. Net-Libraries uses inter process communication (IPC) mechanisms such as named pipes, remote procedure calls (RPCs), and Windows Sockets. Several Net-Libraries are included with SQL Server for both the server and the client. Net-Libraries on server listen for client connection attempts

2.1 Application Architecture

In this section we look architecture and discuss how it constructed. For analysis of architecture, we have found it convenient to three primary components of Event Management portal.

- **User**
The user is a computer system, typically a personal computer, connected to the Internet either directly, through an Internet service provider (ISP), or indirectly, through a corporate network. The End user uses the client computer for browsing events, advertising events and booking tickets.
- **Admin**
The admin is a computer system or systems that contain the organizer's event advertisement catalog and, in the case of online booking for over the Net fulfillment.
- **Log system**
The log system is the computer system that process a particular booking and that are responsible for payment, record keeping, and other business aspects of the advertisement and transaction.

2.2 Application Information flows

User

- First of all user have to create their own account for access facilities if not have then.
- At home page it have a list of all event advertisements form where user can view banner , venue path with help of Google map and have an option for ticket booking.
- At home page he/she has link for search event page where he/she search event by title, category and venue.
- For creating event's advertisement user have a tab where it he/she fill necessary details about event and then create event. After it event goes first deactive events list at admin side for activation and after active event by admin it will show in home page.
- Another facility for view the list of events he/she made in owner's event list either it active or not.
- Has facility for change password if he/she forgot password of their own.

Admin

- First of all admin have to login in admin panel only by admin login page.
- At home page it have a list of all event advertisements form where user can view banner , venue path with help of Google map and have an option for ticket booking.
- Have link for category where it have list of category and have option for edit and delete it
- There is another link for add category where admin can add new category which is show in category list.
- Have a link of Active Event List, where it will show all active events of website and have option for deactive them.
- Have a link of Deactive Event List, where it will show all deactive events of website and have option for active them. All new created events first show here and after active it will show at home page.
- Have a link for register new admin.
- Have a link for show list of all booking for events.

2.3 Interactions with other Applications

Google Map

Website use Google Map Service for shoe venue. We generate the api key for google map service and by it we can run JavaScript for map for it we have to pass four parameter venue, longitude, latitude and address for the event.

2.4 Capabilities

Provide a list of the capabilities need to support this Project. Example: a database application must provide capabilities to support business application such as retrieving/adding/deleting/updating user data.

User

- Have capability for creating own account.

- Can create new event for advertisement.
- Can view their own created events.
- Can book ticket for event.
- Can update their password by forgot password link
- Search events by title, category and venue.

Admin

- Can register new Admin.
- Can view list of category of website.
- Have right for creating new Category as well as update and delete existing category.
- Have list of Active Events and can deactivate them.
- Have list of Deactive Events and can active them.
- Have list of all ticket booked.

2.5 Risk Assessment and Management

This section is used to identify as early as possible some of the risks that are associated with the introduction of this project. It should also contain recommendations to eliminate or minimize these risks.

Risk	Category	Probabilit y	Impact	RMMM
Will the system be able to meet all its objectives?	Project risk	70%	1	Proper definition of project risk
Will the application be able to meet its requirements?	Performance risk	40%	2	Proper requirement gathering process
What if implementation fails?	Functional risk	70%	4	Using other services
Larger no. of users estimated	Project size risk	40%	2	Efficient database management

Impact values:-

- 1-Catastropic
- 2-Critical
- 3-Marginal
- 4-Neglible

3 Project Requirements

3.1 Identification of Requirements

By analysis for Event Management Portal we found following requirements:

- **Specific** – Have to create accounts for user and admin, Have to create category and edit and delete it, have to create event and active and deactivate it, have to show all active events on home page, have to list all active and deactivate events, Have to show location of event by google map service, Have to book ticket for event, Have to show booking list of ticket.
- **Achievable** – we accomplished all requirements which specify above.
- **Realistic** – All these requirements we achieved have necessary for real time.

3.2 Operations, Administration, Maintenance and Provisioning (OAM&P)

To our user and customers for maintenance of website we provide user data backup and routine maintenance.

3.3 Security and Fraud Prevention

- For Security we block SQL injection for login for user as well as admin.
- For Security reasons we have create separate login for admin and user so if any other person get admin user id and password still he/she can't access admin account.

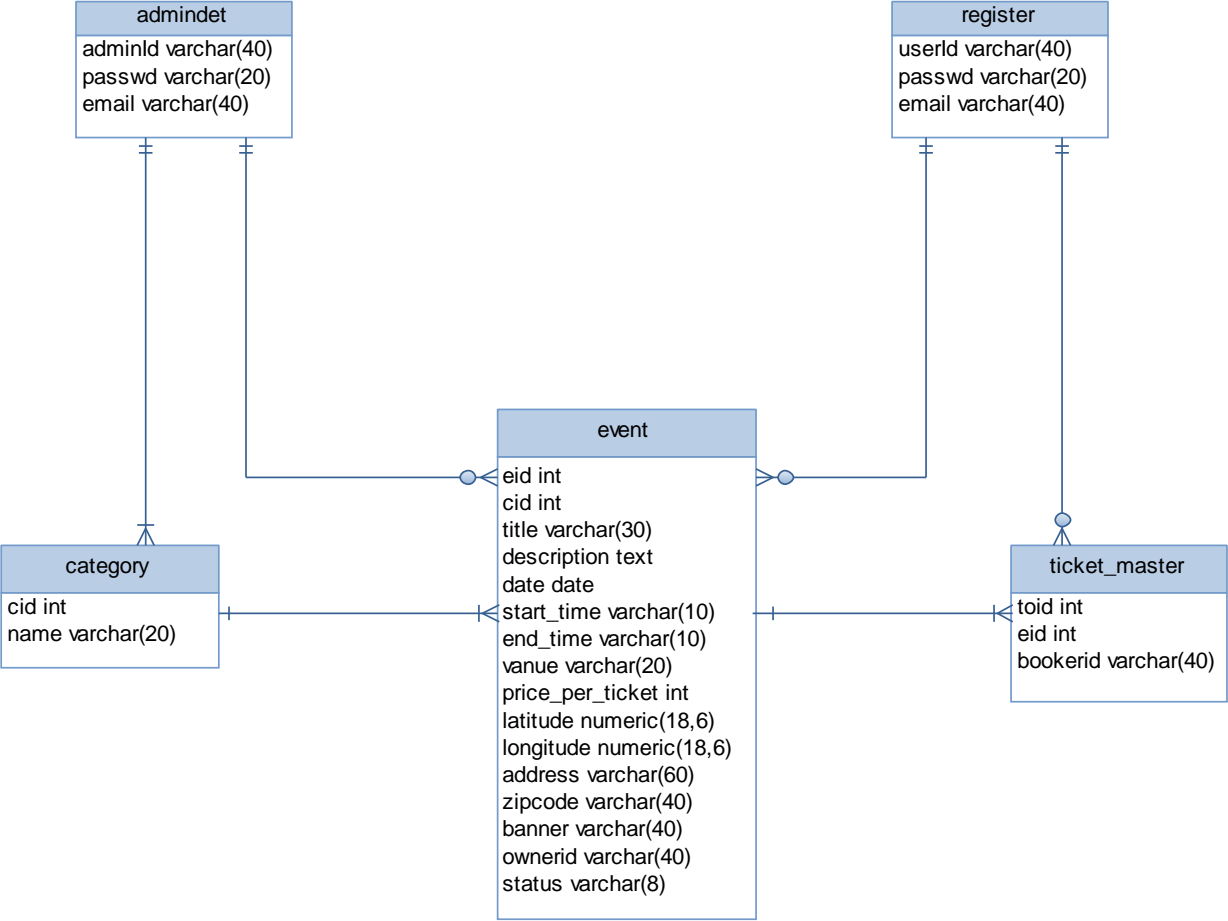
3.4 Release and Transition Plan

We provide source code of website to customer at release.

4 Internal/external Interface Impacts and Specification

By using this website user will advertise their events through internet so they can reach much more peoples by website and advertise it and can get booking for it. Even user can get more information about different kinds of events from many different kind of places and can book tickets for that events.

4.1 Data Model Diagram



5 Design Units Impacts

Replace this section with a list of the impacted design units (functional areas). For new products this would be a list of all new functional areas and would therefore describe the new system architecture. However it is done, the design should clearly reflect how the design units fit together to define the project. Each functional area (or design unit) should have its own subsection below. If there are no known impacts to a given functional area, then that should be explicitly stated. For your project, it could be only one design unit that will covers all requirements, or you could have multiple design units (e.g., one for web interface, one for your application, and one for maintenance process etc.).

Following are the list of Design Units and their Impacts

- A. Register User
- B. Login User
- C. View Active Events
- D. Create New Events
- E. List of Own Events
- F. Search Events
- G. Login Admin
- H. Register Admin
- I. List of Category
- J. Create and modify Category
- K. List of Active Events
- L. List of Deactive Events
- M. List of booking

5.1 Functional Area A/Design Unit A

5.1.1 Functional Overview

By this functional area we can register new user.

5.1.2 Impacts

As impact it will create a one login id and password of every user with email id.

5.1.3 Requirements

For this Functional area it will requires one register page for user registration and related register table so data enter in it.

5.2 Functional Area B/Design Unit B

5.2.1 Functional Overview

By this functional area user can login in website by their user id

5.2.2 Impacts

As impact it will show user id of login user on home page even he/she access other user facilities.

5.2.3 Requirements

For this Functional area it will need user login form as well as user register table where user's login id and password are store so it will check id and password from it and it is correct then login it in to website.

5.3 Functional Area C/Design Unit C

5.3 Functional Overview

In this functional area user can view all active events at home page

5.3.1 Impacts

As impact it will show all activate events on home page with option of booking and google map

5.3.2 Requirements

For this are it will need form for view event list and google map with table of data contains events data so it will access status of event and only active events show. It will also get latitude, longitude, venue details for google map.

5.4 Functional Area D/Design Unit D

5.4.1 Functional Overview

In this functional are user can create event

5.4.2 Impacts

As Impact of this area it will create event for advertisement for user and show on home page after activated.

5.4.3 Requirements

For this are it will needed a form for event create page and table for store its data. So we can store and access events details.

5.5 Functional Area E/Design Unit E

5.5.1 Functional Overview

In this functional area user can view their own created events

5.5.2 Impacts

As Impact it will show list of all events created by login user either it active or deactive.

5.5.3 Requirements

For this area it require form for show events, login user name and table which contain event's details.

5.6 Functional Area F/Design Unit F

5.6.1 Functional Overview

In this functional area user can search events by title, category and venue

5.6.2 Impacts

As Impact it will show list of all events as per title, category and venue as per search data enter.

5.6.3 Requirements

For this area it will require Form for it and table of contain event's details.

5.7 Functional Area G/Design Unit G

5.7.1 Functional Overview

In tis functional are admin can login in their account?

5.7.2 Impacts

As per impact it will show login admin id at admin home page as well as all admin rights.

5.7.3 Requirements

This area require Admin login form, table in which admin data store; so it can compare it and login if correct data enter .

5.8 Functional Area H/Design Unit H

5.8.1 Functional Overview

In this functional area admin can register new admin

5.8.2 Impacts

As impact it will add new admin in website and enter admin id and password in admin table for new admin.

5.8.3 Requirements

For this area it will require admin registration form and table admin register table for store admin details.

5.9 Functional Area I/Design Unit I

5.9.1 Functional Overview

In this functional area it will show list of category

5.9.2 Impacts

As impact of this area it will show the list of all categories currently available in website. Also have option for edit and delete category.

5.9.3 Requirements

For this area it required form for show category and table which contains category details.

5.10 Functional Area J/Design Unit J

5.10.1 Functional Overview

In this functional area admin will create and modify category

5.10.2 Impacts

As impact it will create new category for website or modify currently exist category of website.

5.10.3 Requirements

For this area it will require form for create category page and modify category page and also table in which it contain category data for store new category data or modify existing category data.

5.11 Functional Area K/Design Unit K

5.11.1 Functional Overview

In this functional area admin can view all active event list

5.11.2 Impacts

As Impact it will show admin list of all active events of website and have an option of deactivate that events.

5.11.3 Requirements

For this area it will require form for show list to admin and code for deactivate that events and table which contains events details where we can access all events which' s status is active.

5.12 Functional Area L/Design Unit L

5.12.1 Functional Overview

In this functional area admin can view all deactivate event list

5.12.2 Impacts

As Impact it will show admin list of all deactivate events of website and have an option of active that events.

5.12.3 Requirements

For this area it will require form for show list to admin and code for active that events and table which contains events details where we can access all events which' s status is deactivate.

5.13 Functional Area M/Design Unit M

5.13.1 Functional Overview

In this Functional area admin can show list of all booked ticket details.

5.13.2 Impacts

As impact admin can view list of all booked ticket for events.

5.13.3 Requirements

For this area it requires form for show list of booking and table in which it will store data related to booking details.

6 Conclusion

Event management is a glamorous and exciting profession which demands a lot of hard work and dynamism. As the name suggests, it means conceptualizing, planning, organizing and finally executing an event. The event could be of any type - musical show, concert, exhibition, product launching etc. It offers enormous scope for ambitious young people.

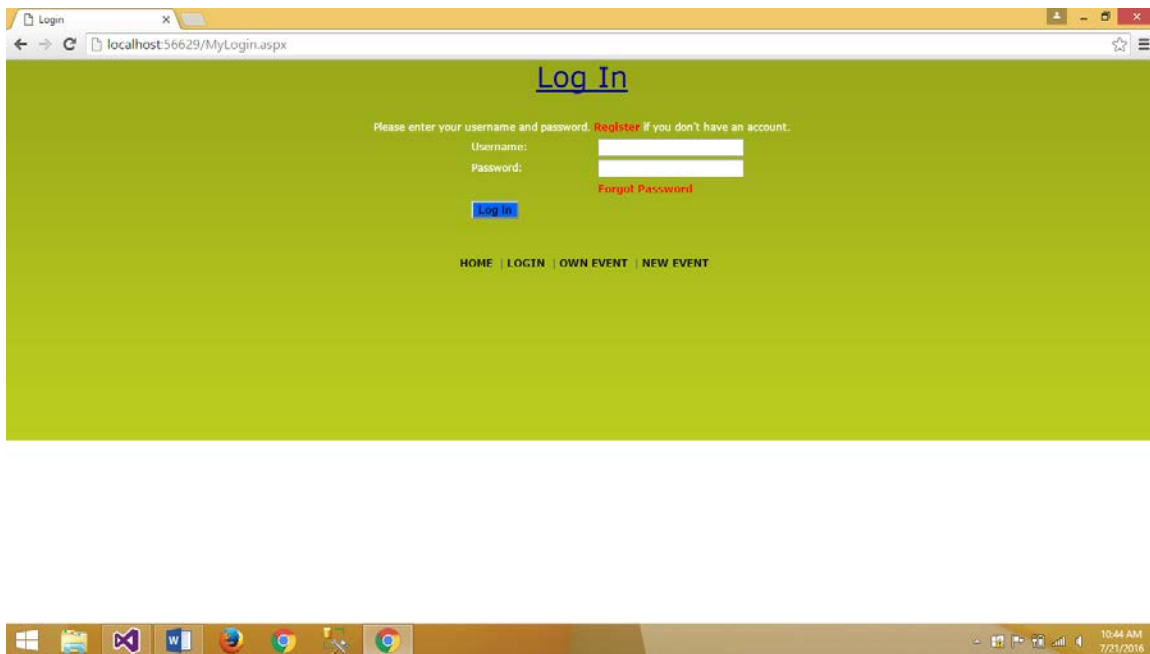
Event management is the planning and implementation of events, large and small that meet the marketing goals of an organization. Event management is an area that is growing rapidly, and is expected to have a better growth rate in the next decade. Typical events organized by professional event managers include product launches, parties, sponsored events, sporting events, competitions, concerts and festivals, fundraisers, trade shows, corporate open days, seminars and tours.

7 Screenshots:

Home:

EVENT ID	TITLE	DESCRIPTION	DATE	STARTING	ENDING	VENUE	TICKET PRICE	CAPACITY	ADDRESS	ZIPCODE	ORGANIZER	BANNER	MAP	BOOK
4	Musical	Sufi music	8/11/2016 12:00:00 AM	7:00 PM	9:00 PM	Viraj Theater	100		Viraj Theater Near Bandara station Mumbai	324567			Map	Book
5	music festival	music festival	9/15/2016 12:00:00 AM	9:00	12:00	chicago	55		chicago	60383	efg		Map	Book
7	festival	firework	9/15/2016 12:00:00 AM	9:00	12:00	chicago	15		chicago	60383	madhan		Map	Book
16	soccer	rock	7/7/2016 12:00:00 AM	9:00	12:00	mahd	55	100	aurora	60383	madhan		Map	Book

Login:



Owner event:

EVENT ID	CATEGORY ID	TITLE	DESCRIPTION	DATE	STARTING	ENDING	VENUE	TICKET PRICE	CAPACITY	ADDRESS	ZIPCODE	STATUS	BANNER	MAP
7	1	festival	firework	9/15/2016 12:00:00 AM	9:00	12:00	chicago	15		chicago	60383	Active		Map
8	1	festival	music festival	9/15/2016 12:00:00 AM	9:00	9	chicago	15		chicago	60383	Deactive		Map
9	1	festival	music festival	9/15/2016 12:00:00 AM	9:00	9	chicago	15		chicago	60383	Deactive		Map
11	1	festival	firework	7/7/2016 12:00:00 AM	9:00	12:00	mahd	15		chicago	60383	Deactive		Map
15	1	soccer	play	7/26/2016 12:00:00 AM	9:00	12:00	aurora	15		aurora	60486	Deactive		Map

Add event:

Add New Event

Select Category:

Title:

Description:

Date:

Start Time:

End Time:

Venue:

Price Per Ticket:

capacity:

Latitude:

Longitude:

Address:

zipcode:

Banner: No file chosen

HOME | LOGIN | OWN EVENT | NEW EVENT

Search event:

Search Event

Enter Title:

Select Category:

Enter Venue:

Search Result of Title

Search Result of Category

EVENT ID	CATEGORY ID	TITLE	DESCRIPTION	DATE	STARTING	ENDING	VENUE	TICKET PRICE	ADDRESS	ZIPCODE	ORGANIZER	STATUS	BANNER	MAP
2	1	p1	play of war	8/11/2016 12:00:00 AM	7:00 PM	9:00 PM	Viraj Theater	100	Viraj Theater Near Bandara station Mumbai	324567	abc	Deactive		Map
6	1	festival	firework	9/15/2016 12:00:00 AM	9:00	12:00	chicago	15	chicago	60383	efg	Deactive		Map
7	1	festival	firework	9/15/2016 12:00:00 AM	9:00	12:00	chicago	15	chicago	60383	madhan	Active		Map
8	1	festival	music festival	9/15/2016 12:00:00 AM	9:00	9	chicago	15	chicago	60383	madhan	Deactive		Map

Admin:

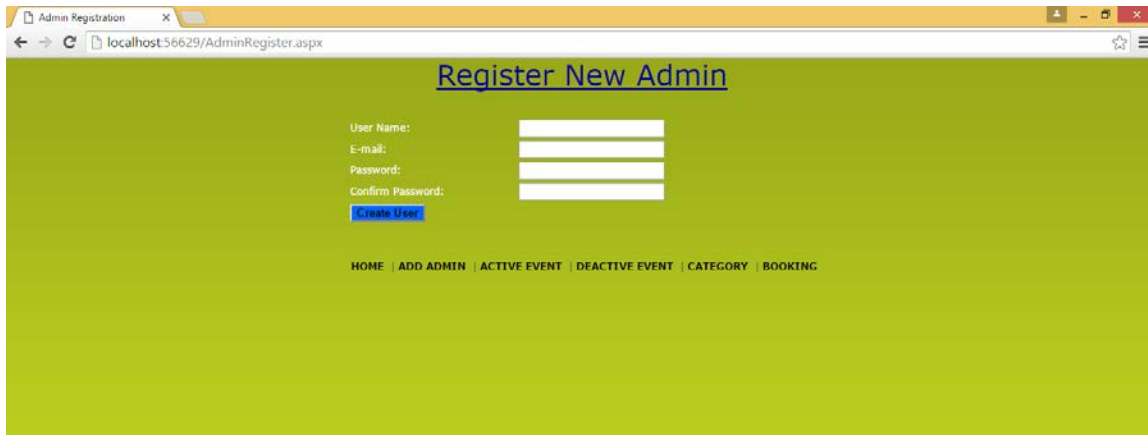
Admin Home Page

admin

EVENT ID	CATEGORY ID	TITLE	DESCRIPTION	DATE	STARTING	ENDING	VENUE	TICKET PRICE	ADDRESS	ZIPCODE	ORGANIZER	BANNER	MAP
4	2	Musical	Sufi music	8/11/2016 12:00:00 AM	7:00 PM	9:00 PM	Viraj Theater	100	Viraj Theater Near Bandara station Mumbai	324567			Map

HOME | ADD ADMIN | ACTIVE EVENT | DEACTIVE EVENT | CATEGORY | BOOKING

Add admin:



Active event:

EVENT ID	CATEGORY ID	TITLE	DESCRIPTION	DATE	STARTING	ENDING	VENUE	TICKET PRICE	ADDRESS	ZIPCODE	ORGANIZER	BANNER	Deactive
4	2	Musical	Sufi music	8/11/2016 12:00:00 AM	7:00 PM	9:00 PM	Viraj Theater	100	Viraj Theater Near Bandara station Mumbai	324567			Deactive
5	2	music festival	music festival	9/15/2016 12:00:00 AM	9:00	12:00	chicago	55	chicago	60383	efg		Deactive
7	1	festival	firework	9/15/2016 12:00:00 AM	9:00	12:00	chicago	15	chicago	60383	madhan		Deactive
16	1	soccer	rock	7/7/2016 12:00:00 AM	9:00	12:00	mahd	55	aurara	60383	madhan		Deactive



8 Acknowledgements

First of all I would like to take this opportunity to thank the Governor's state University for having projects as a part of the MMS curriculum.

Many people have influenced the shape and content of this project, and many supported me through it, express my sincere gratitude to Prof. Dr. Soon Ok Park for helping me throughout my project GSU Event portal which is an interesting and exhaustive project.

She has been an inspiration and role model for this project. Her guidance and active support has made it possible to complete my project successfully.

9 References

1. *Introduction to the C# Language and the .NET Framework*. (Retrieved from Microsoft)
<https://msdn.microsoft.com/en-us/library/z1zx9t92.aspx>
2. *Pro ASP.NET 2.0 in C# 2005, Special Edition*. (Retrieved from)
<http://www.apress.com/9781590597682>
3. *Professional ASP.NET 2.0 Special Edition*. (Retrieved from)
<http://www.wrox.com/WileyCDA/WroxTitle/Professional-ASP-NET-2-0-SpecialEdition.productCd-0470041781.html>