

3-31-1978

## Faze 1, 1978-03-31

Office of University Relations

Follow this and additional works at: [http://opus.govst.edu/faze\\_1](http://opus.govst.edu/faze_1)

---

### Recommended Citation

Governors State University Office of University Relations, Faze 1 (1978, March 31). [http://opus.govst.edu/faze\\_1/324](http://opus.govst.edu/faze_1/324)

This Newsletter is brought to you for free and open access by the University Newsletters at OPUS Open Portal to University Scholarship. It has been accepted for inclusion in Faze 1 by an authorized administrator of OPUS Open Portal to University Scholarship. For more information, please contact [opus@govst.edu](mailto:opus@govst.edu).



GSU ARCHIVES  
Box 4 #1

A Publication of the  
Office of University Relations  
Governors State University  
Park Forest South, Illinois 60466



But when we play the fool, how wide  
The theatre expands! beside,  
How long the audience sits before us!  
How many prompters! what a chorus! —LANDOR, *Plays*

March 31, 1978

Vol. 7, No. 27

GRANT ANNOUNCED . . .

The National Science Foundation has awarded \$15,550 to GSU for twelve months support of the project "Comparing Total Direct/Indirect Energy Cost of Single and Multi-Family Housing."

The project is under the direction of Richard J. Engel, Student Project Director, assisted by Efraim Gil (EAS) Faculty Project Advisor.

FILL IT UP . . .

At least half-way, states a new motor pool policy issued by BPO for all university personnel using state vehicles. "Motor pool vehicles shall be returned to their storage area with at least a half tank of gasoline." Your cooperation is requested.

NOTICE . . .

The Affirmative Action Register will be available in the LRC for anyone who wishes to see it.

REMINDER . . .

Garden plots are available to any and all GSU employees on a first-come, first-served basis. To reserve one or more garden plots, submit \$7.00 for each plot to Cliff Eagleton, Associate Dean, CHLD, by April 10.

"THE CITY AND THE MEDIA" . . .

will be presented at GSU May 20-21. Sponsored by the Media Communications Program of CCS, the symposium will feature John Callaway of Channel 11, Bill Curtis of Channel 2, Russ Ewing of Channel 5 and Eliot Wald, radio-television critic of the Chicago Sun-Times. More than 20 professional journalists and media professionals will also participate.

Panel discussions planned are "The Media in Historical Perspective," "The Media in Future Perspective" and "The Death of the Chicago Daily News."

The symposium is being offered as a Block 2 module for the Spring/Summer Trimester. Two units of academic credit may be earned.

The general public may also attend for an admission fee of \$10.00.

For further info contact Mel Muchnik, x2448 or Arthur Fried, x2384.

VETERANS OF INNOVATION . . .

Six Years

Angie Thomas	LRC	4/3
Cathy Taylor	A&R	4/14
Helen Lipke	CCS	4/17
Jeff Bushong	Payroll	4/17
Burt Collins	Placement	4/17
Tim Arr	BO	4/24

Five Years

Jim Buckenmyer	BPS	4/15
Richard Cunningham	ICC	4/30
Karl Harrison	DPS	4/1

GSU CLASSIFIED . . .

Vacant Civil Service Job Classifications as of March 30, 1978:

2/14/78	Graphic Arts Designer	ICC
2/14	Secretary IV Steno	DPS
2/22	Work Program Participant	EAS
2/24	Cold Type Operator II	ICC
3/3	Clerk II	A&R
3/9	Secretary IV Steno	EAS
3/9	Secretary IV Trans (part-time)	EAS
3/15	Work Program Participant	LRC
3/21	Personnel Officer V (Director of Personnel)	Pers

POSITIONS OPEN . . .

Television Producer in Instructional Communications Center. Must be familiar with television production procedures in a university setting; Masters degree in TV or equivalent experience.

Application deadline is May 1, 1978.

SPEND A SEMESTER ABROAD . . .

The Provost's Office has catalog and application material for anyone interested in study abroad opportunities with the School for International Training. The School is fully accredited and offers study programs in 16 countries. Contact Barbara Purcell, x 2343 for materials.

PUBLISHED . . .

Robert Krebs (OR) authored "External Support for Science and Engineering in Community Colleges" in Community College Frontiers, Winter '78, Vol. 6, No. 2.

MENU-OF-THE-WEEK . . .

<u>Mon</u>	Minestrone; Sausage Links/Sl.Apples; Turkey Tetrizzini; Brn.New Pot., Peas; Hot Sand.-BBQ Bf/Bun.
<u>Tues</u>	Chkn Ndl.; Meatloaf; Lima B./Ham; Whp.Pot., Corn; Hot Sand.-Gr. Cheese/Bacon.
<u>Wed</u>	Bf. Veg.; Stuffed Pepper/Tom.S.; Bk. Ham/Peach Glaze; Hash Crm. Pot.; Grn. Beans; Hot Sand.-R. Bf/H. Roll.
<u>Thurs</u>	Old Fash. Bean; Turkey Divan; Bk. Lasagna; Whp. Pot., Peas; Hot Sand.-Bk. Ham/Rye.
<u>Fri</u>	Man. Clam Chwd.; Swiss Stk.; Mac. & Cheese; Whp. Pot., Harv. Beets; Hot Sand.-Patty Melt/Rye.

ILLINOIS PRAIRIE WORKSHOP . . .

"Environmental Field Studies: Illinois Prairie" will be offered at GSU in May. The only workshop in the Chicago area on both Illinois prairies and outdoor methods in environmental science, the class offers on-site field studies of prairie remnants in the southwest suburban areas, including the Markham and Goose Lake prairies. Three units of credit may be earned in the class, coordinated by Louis Mule (EAS). Advance registration continues through April 15.

EDUCATIONAL TOURS . . .

Academic credit via summer travel is available at Western Illinois University through the Division of International Programs.

Tours include Japan, Guadalajara, South America, Mexico, East Africa and Europe.

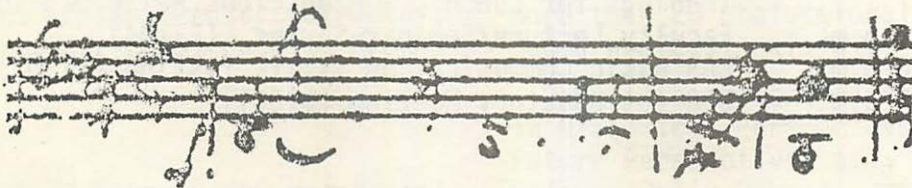
For further info contact the Office of International Programs, Western Illinois University, Sherman Hall 303, Macomb, IL 61455--telephone 309/298-1488.

GSUings . . .

TOM DEEM (CCR) participating on panel "Articulation Between Community Colleges and Upper Division Institutions" at Illinois Community College Faculty Assoc. Conference . . . DAN SWENSON (BPS) speaking to the Chicago Business Teacher Assoc. on "Challenges in Business Communication" . . . JOHN JOHNSON (ICC) serving as a judge for the Illinois Student Media Fair at Illinois State University . . . LYDIA FONTAN (CCS) presenting "The Filipino Short Story" in Philippine Literature Symposium at annual meeting of the Association for Asian Studies, Inc. in Chicago . . . DON HERZOG (BPS) attending technical program on nuclear energy sponsored by Argonne National Laboratory and the American Society for Quality Control . . .

LAST WEEK'S ANSWERS . . .

1. Is it legal in your state for a man to marry his widow's sister? Ans: The wife being a widow, the man is dead and won't be marrying anyone.
2. Can a man living in the United States be buried in Ireland? Ans: No. He's still alive.
3. Do they have a Fourth of July in England? Ans: Yes, between the third and the fifth of July.
4. In this country, how many birthdays does the average man have? Ans: One. The rest are anniversaries.



#### UNIVERSITY-COMMUNITY CHORALE AND SOLOISTS

In front row are principals, left to right, director Dr. Rudolf Strukoff (CCS); soloists Connie Bennema of Park Forest, soprano; James Robinson of Park Forest, baritone; Wayne Doverspike of Tinley Park, baritone; Edward Spencer of Park Forest, tenor; and Jeanne Vaughn of Harvey, soprano; and accompanist Marilyn Bourgeois.

The first public appearance of the new University-Community Chorale at Governors State University is scheduled for Sunday, April 16 in the Music Recital Hall.

The free concert of the oratorios, "Requiem," by Gabriel Faure, and "Mass in G Major," by Franz Schubert, will be held at 4 p.m.

Chorale members include 14 university students and 26 community residents from Chicago, Chicago Heights, Crest Hill, Crete, Flossmoor, Harvey, Homewood, Joliet, Maywood, Oak Forest, Olympia Fields, Orland Park, Park Forest, Park Forest South, Peotone, St. Anne, South Chicago Heights, Tinley Park, and Worth.

Marilyn Bourgeois is Chorale accompanist..

A new university-community chamber orchestra will appear with the Chorale.

Director of the Chorale is Dr. Rudolf Strukoff, music professor in the College of Cultural Studies. Dr. Strukoff was formerly at Michigan State University, Andrews University, and Indiana State University. He received a B.M.E. degree at Andrews and a Ph.D. at Michigan State.

Further information about the concert may be obtained by telephoning 312/534-5000, x2454.

# EVENTS

## SATURDAY, April 1

APRIL FOOL!

8:30 a.m. - 12:00 noon  
12:30 p.m. - 5:00 p.m.

Reservations due: Environmental Education Workshop, Mass.  
HLD Orientation--entering students, S/S Trimester (HOG, EH)  
Children's Film: Cartoon Festival (A1102) 75¢; adults  
accompanying children free. Continuous showing.

## SUNDAY, April 2

## MONDAY, April 3

S/S Trimester ADVANCE REGISTRATION thru April 15

8:30 a.m. - 3:30 p.m.  
8:30 a.m. - 10:30 a.m.  
9:30 a.m.  
10:00 a.m. - 11:00 a.m.  
3:30 p.m. - 4:30 p.m.

Area Service Center Workshop (E1108)  
EAS Basic Communication Skills Testing (A1102)  
ICC Production Meeting (ICC Preview Room)  
Vice Presidents' Meeting (PCA)  
Placement Office Career Sessions: "Resume: How to Get  
It All Together on Paper!" (F1105)

## TUESDAY, April 4

1:00 p.m. & 6:30 p.m.  
2:00 p.m. - 4:00 p.m.  
2:30 p.m. - 4:30 p.m.  
7:30 p.m.

Movie: "Dog Day Afternoon" (EH) Free.  
Academic Council (PCA)  
EAS Basic Communication Skills Testing (A1102)  
Jazz Concert: "Down the Road" (MRH)

## WEDNESDAY, April 5

10:00 a.m. - 3:00 p.m.  
11:45 a.m. - 1:45 p.m.  
12:00 noon  
2:30 p.m. - 4:30 p.m.  
7:30 p.m. - 9:30 p.m.  
7:30 p.m. - 9:30 p.m.

BOG Program: ACT/PEP Meeting (E1104)  
Women's Resource Center Brown Bag Lunch: "Uppity Women  
in the Bible" (E1108)  
Theology for Lunch: "Unconscious Religious Images" (E1105)  
Faculty Lecture/Seminar Series (E1104)  
EAS Basic Communication Skills Testing (A1102)  
BOG Introductory Meeting (B1501)

## THURSDAY, April 6

10:00 a.m.  
3:00 p.m. - 5:00 p.m.  
5:30 p.m. - 6:30 p.m.

Future Committee (E1108)  
"Coffee & Conversation" with the President (HOG)  
Divorce Seminar (EH)

## FRIDAY, April 7

5:30 p.m. - 11:00 p.m.

National Neighbors Meeting/Conference (EH)

## SATURDAY, April 8

9:00 a.m. - 6:00 p.m.

National Neighbors Meeting/Conference (B1501, B2501, B1107,  
B1318)

## SUNDAY, April 9

NATIONAL MEDICAL LABORATORY WEEK, April 9-15

9:00 a.m. - 12:00 noon  
3:00 p.m. - 5:00 p.m.

National Neighbors Meeting/Conference  
CCS ALUMNI DAY (MRH)

\* \* \* \* \*

Our Deadline for submissions is Wednesday noon. Send your news  
to Faze I, Office of University Relations.

\* \* \* \* \*

DIAL "INFO LINE" 534-0033 FOR RECORDED UNIVERSITY ANNOUNCEMENTS