

6-6-1980

## Faze 1, 1980-06-06

Office of University Relations

Follow this and additional works at: [http://opus.govst.edu/faze\\_1](http://opus.govst.edu/faze_1)

---

### Recommended Citation

Governors State University Office of University Relations, Faze 1 (1980, June 6). [http://opus.govst.edu/faze\\_1/434](http://opus.govst.edu/faze_1/434)

This Newsletter is brought to you for free and open access by the University Newsletters at OPUS Open Portal to University Scholarship. It has been accepted for inclusion in Faze 1 by an authorized administrator of OPUS Open Portal to University Scholarship. For more information, please contact [opus@govst.edu](mailto:opus@govst.edu).



GSU ARCHIVES  
4/2

A Publication of the  
Office of University Relations  
Governors State University  
Park Forest South, Illinois 60466

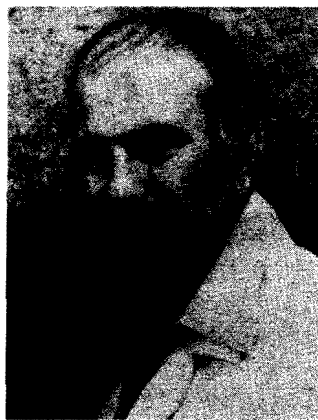


The purpose of all higher education is to make men aware of what was and what is; to incite them to probe into what may be. It seeks to teach them to understand, to evaluate, to communicate.

--Otto Kleppner

June 6, 1980

Vol. 9, No. 35



**Jewel Lafontant Harry Mark Petrakis**  
RECEIVING HONORARY DEGREES . . . at GSU's tenth Commencement, Saturday and Sunday, June 7 and 8, at 2 p.m., will be two distinguished and noted Chicagoans: Jewel Lafontant and Harry Mark Petrakis. Petrakis, well-known novelist and short story writer, will deliver the Commencement address Saturday at the ceremony honoring candidates for graduation from the College of Human Learning and Development, and the Board of Governors and University Without Walls Degree Programs. Lafontant, Special Assistant Attorney General for the State of Illinois and a distinguished figure both in law and government, will speak at the Sunday ceremony honoring graduation candidates from the College of Business and Public Administration, the College of Arts and Sciences, and the School of Health Professions. Both speakers will be awarded honorary Doctor of Humane Letters degrees. The ceremonies will be held in the Gymnasium.

THE TASK FORCE ON COMMUNICATIONS . . . will conduct open hearings Tuesday, June 10, from 10 a.m.-12 noon in the 3rd Floor Administrative Conference Room. A primary charge to the Task Force by the Provost was to consider a consolidated structure of communication-related academic programs and service functions, proposed as a School of Communication. The Task Force has developed a position paper as a vehicle for soliciting responses from concerned faculty and staff. Copies of the position paper can be obtained from Donna Rutledge, ICC, x2390. In addition to the open hearings, written responses may be forwarded to any of the Task Force members: Mel Muchnik (CAS), Chairman; Ed Flowers (ICC); Young Kim (HLD); Ralph Kruse (ICC); and Mike Stelnicki (HLD).

YOU ARE INVITED . . . to a farewell party in honor of Steve Bellin, Assistant Director of Financial Aids, who has accepted the position of Director of Financial Aids at Columbia College in Chicago. The farewell party will be held from 2-4 p.m., Thursday, June 12, in Engbretson Hall. The GSU community is invited to join the Office of Financial Aids in expressing best wishes and farewell.

\*\*\*\*\*

ATTENTION, FACULTY & ADMINISTRATORS . . . Those planning to participate in the Commencement Ceremonies, June 7 and/or 8, and who have not yet notified IR&P, should do so immediately so arrangements for adequate seating can be finalized. It is extremely important that IR&P be contacted early today (Friday) at x2348.

\*\*\*\*\*

A SPECIAL ELECTION . . . to fill an opening on the Civil Service Advisory Committee to the Merit Board has been scheduled for July 1, 1980. The special election is necessary due to the resignation of Tim Arr. Anyone interested in serving on this committee should obtain a Petition for Candidacy from GSU's Personnel Office. All Statements of Candidacy and signed petitions should be returned to the Personnel Office by 5 p.m., Thursday, June 12. The term for this position will end December 31, 1984. To be eligible for nomination and election to membership on this committee, a Civil Service employee must have a full-time certified status appointment in the System and have at least three current consecutive years of Civil Service employment in an institution currently served by the System at the time the candidate obtains the petition and Statement of Candidacy.

JUNE VETERANS OF INNOVATION . . .  
Nine Years

Ralph Winston	BPA	6/1
---------------	-----	-----

Eight Years

Earl Collins	DPS	6/1
Ted Reid	DPS	6/1
Bill Wickersham	PPO	6/1
Irv Roberts	BO	6/7
Emery Peterson	PPO	6/19

Seven Years

Michael Foley	PPO	6/1
Roy Cogdell	HLD	6/16
Esthel Allen	PO	6/25

Six Years

Richard Burd	ICC	6/3
Bob Jensen	BO	6/3
Wanda Sebastian	PPO	6/3
Dorothy Body Randall	FA	6/14

Five Years

Margaret Morton	BPA	6/1
-----------------	-----	-----

FOR YOUR INFORMATION . . . The ICC Distribution Center staff has welcomed a new staff member, Paul Parker, who can be reached at x2298. There has also been a change in the following phone extensions in ICC: Jack Mulder and Audio Production can now be reached at x2547; Rick Robinson and Equipment Distribution, x2298.

AN EVENING . . . of non-traditional theatre will be presented by GSU on Friday, June 6, at 8 p.m. when the Facets Ensemble, an experimental theatre company from Chicago, presents "Dark Solstice."

WORKSHOP SLATED . . . The Urban Teacher Education (UTE) Division of HLD is sponsoring an In-Service Education Workshop, Wednesday, June 11, 1-3 p.m., in Room C-3323. Its central theme will be "Faculty Development in Higher Education" and will be conducted by Dr. Jack Lindquist, senior associate of the Institute for Academic Improvement, Memphis State University, Memphis, Tennessee. GSU faculty are invited to sit in on the session.

CONTINUING . . . through June 12 in GSU's Visual Arts Gallery is a graduate student art exhibit (printmaking/design) by Sikiru Onisemoh, Chicago. Robert Burchenski, Joliet, will exhibit his graduate art project (painting/drawing), June 16-26. The Gallery is open to the public, Mondays-Thursdays, 10:30 a.m.-4:30 p.m.

GLOWING GRAD . . . Rita Durrant (B.A., BOG) was among the members of the National League of American Penwomen who were recently honored at a White House reception. She will be among the graduates participating in Commencement this weekend. She and her husband John are formerly of Flossmoor and now reside in Bensalem, Pennsylvania.

GSUings . . . LEO GOODMAN-MALAMUTH (President) delivering the principal address at the conference on "Career Development for the College Administrator," sponsored by the American Association of University Administrators at the Chicago O'Hare Hilton, May 15. His topic was "A College Views Career Development for the '80's" . . . SANDRA WHITAKER (HLD) conducting a workshop on mental health at the Suburban Hispanic Social Service Conference, May 15. Beginning June 10, she will be making a series of presentations (four three-hour sessions) to members of the Harvey community and District 147. The presentations are designed to teach assertiveness and leadership skills to community leaders who will share the information with other community members . . . Condolences to HERM SIEVERING (CAS) and his family on the recent death of his father. He was funeralized Monday . . . Condolences to NANCY DOMINIK (ICC) and her family on the death of her uncle who died last week in Arizona . . . Best wishes to KATIE ZITTER (OR) who suffered a fall last weekend, dislocating her thumb in three places . . . Congratulations to WILMA COOPER (UL) and her husband John who celebrated their 40th wedding anniversary, last Sunday . . . Happy Birthday to BILL DODD (UR) on June 10.

CONGRATULATIONS . . . to Alma Martin, GSU graduate student and president of the Student Senate, who has been elected chairperson of the National Third World Student Coalition.

RECENT FILM ACQUISITIONS . . . Available in the University Library

- ACCESS (Rack #1263) -- Tells how two people, confined to wheelchairs in mid-life, manage to overcome their handicaps and return to the working world.
- AN ACTOR WORKS (1282) - - Focuses on actress Viveca Lindfors as she prepares herself intellectually, psychologically, and emotionally for the role of Queen Hecuba in Euripides' tragedy, "The Trojan Women."
- CHILD ABUSE, CRADLE OF VIOLENCE (1281) -- A documentary approach to child abuse featuring interviews with former abusive parents. Tells how parents can learn to deal with stress and crisis situations.
- CONTROLLING INTEREST: THE WORLD OF THE MULTINATIONAL CORPORATION (1278) -- Examines the scale and underlying dynamics of multinational corporate expansion, and shows the deleterious social and economic effects of the multinational's power both in the U.S. and the Third World.
- DAVID, OFF AND ON (1260) -- The producer describes her conversations with her brother David in order to illuminate his problems with drugs, school, and society.
- GEOLOGICAL WORK OF ICE (994) -- A discussion of the geological work of ice. Explains the role of ice in the disintegration of rocks and describes glacial movement.
- GLACIATION (1268) -- Discusses the process of glaciation itself, pointing out that glaciers have life and movement.
- THE GREAT LAKES--HOW THEY WERE FORMED (1267) -- Through animated drawings and live-action photography, this film depicts the work of glaciers in forming the Great Lakes thousands of years ago.
- HEREDITY AND ENVIRONMENT (1264) -- Discusses the effects of heredity and environment on a child's emotional, intellectual, and social development.
- HIGHER EDUCATION, WHO NEEDS IT? (1279, 1280) -- Deals with the problem of a surplus of college graduates, by presenting interviews with recent graduates, college placement officers, educators, economists, and politicians.
- THE I.Q. MYTH (1274, 1275) -- Describes standard I.Q. tests, how they have been used in the past, and their use today. Discusses the controversy and some of the abuses that have accompanied the tests. Narrated by Dan Rather.
- METHODOLOGY: THE PSYCHOLOGIST AND THE EXPERIMENT (1265) -- Shows two examples of controlled manipulation with test groups in the laboratory, explaining the basic logic of experimentation in psychology.
- THE NOT-SO-SOLID EARTH (1266) -- Describes the history and geological character of continental drift, the theories on the configuration of the earth's continents, and the new technological developments related to the processes.
- OUT OF THE MOUTHS OF BABES (1277) -- Describes how children learn to speak, a development which begins as early as the age of one month.
- PAUL ROBESON, THE TALLEST TREE IN OUR FOREST (1270, 1271, 1272, 1273) -- Photographs, filmclips, interviews, sound recordings, and newspaper clippings document the life of Paul Robeson.
- PSYCHOANALYSIS (1269) -- Features two psychoanalysts enacting episodes from several analytic sessions. Dr. Maria Piers explains the change in the client's attitude as the months pass and the treatment progresses.
- THE SAND CASTLE (LE CHATEAU DE SABLE) (1276) -- Filmed in a tabletop sandbox, showing animated characters created out of sand, performing various functions and getting into mischief until the wind destroys their world.
- TO BE A MAN (1262) -- A study of the American male's historic and traditional role in society. Profiles the changing status and values through interviews with several prominent men and women.

# EVENTS

## FRIDAY, June 6, 1980

11:00 a.m. - 5:00 p.m.

Videotape Media Showcase: "Stevie Wonder" (On TV monitors, A&B Wing Lounges & Cafeteria)

8:00 p.m.

Facets Ensemble Theatre Presentation: "Dark Solstice" (Theatre)

## SATURDAY, June 7

2:00 p.m.

COMMENCEMENT CEREMONY: HLD, BOG, UWW (Gym)

## SUNDAY, June 8

2:00 p.m.

COMMENCEMENT CEREMONY: CAS, SHP, BPA (Gym)



## WEDNESDAY, June 11

1:00 p.m. - 3:00 p.m.

Workshop: UTE In-Service Education Workshop (C3323)

2:00 p.m. - 5:00 p.m.

Student Senate (HDR)

4:00 p.m. - 6:00 p.m.

Students' Conversation with the President (HOG)

## THURSDAY, June 12

11:00 a.m. - 12:30 p.m.

Meeting: Physical Resources Committee (HDR)

1:00 p.m. - 3:00 p.m.

Meeting: Executive Committee of the Faculty Senate (B Wing Lounge)

## FRIDAY, June 13

2:00 p.m., 4:00 p.m., )

Double Feature Filmfest: "Hearts and Minds" and "The War at Home" (EH)

6:00 p.m. & 8:00 p.m. )

Banquet: Fourth Annual Recognition Banquet for UTE practicum students, supervising teachers and principals (A Wing Lounge, MRH)

6:30 p.m. - 9:00 p.m.

## SATURDAY, June 14

7:30 a.m. - 5:30 p.m.

Insurance Testing (A1102)

9:00 a.m. - 5:00 p.m.

Workshop: Race, Language & Culture (MRH)

9:30 a.m. - 12:30 p.m.

Seminar: BOG Portfolio (EH)