

8-14-1981

## Faze 1, 1981-08-14

Office of University Relations

Follow this and additional works at: [http://opus.govst.edu/faze\\_1](http://opus.govst.edu/faze_1)

---

### Recommended Citation

Governors State University Office of University Relations, Faze 1 (1981, August 14). [http://opus.govst.edu/faze\\_1/488](http://opus.govst.edu/faze_1/488)

This Newsletter is brought to you for free and open access by the University Newsletters at OPUS Open Portal to University Scholarship. It has been accepted for inclusion in Faze 1 by an authorized administrator of OPUS Open Portal to University Scholarship. For more information, please contact [opus@govst.edu](mailto:opus@govst.edu).



You Are Invited To Meet

# MARY MISS

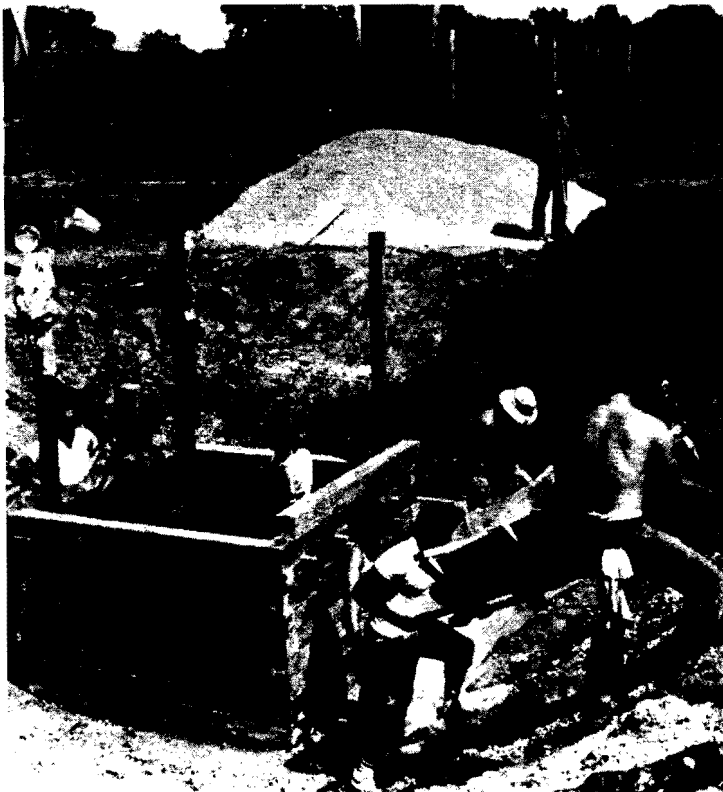


Photo by Karen Deslierre

Construction of the 4-acre sculpture on the campus of GSU is nearing completion. New York sculptor Mary Miss, lower left, is wearing a white shirt and sunglasses.

## PUBLIC INVITED TO VIEW MAJOR SCULPTURE

. . . The largest permanent sculpture ever constructed in the Chicago area is nearing completion on the GSU campus.

Faculty and staff, along with the general public, are invited to view the finished four-acre work; meet New York sculptor Mary Miss, who has been a community professor here this summer, and enjoy a sunset in this unique setting Sunday, the 16th, at 7:30 p.m.

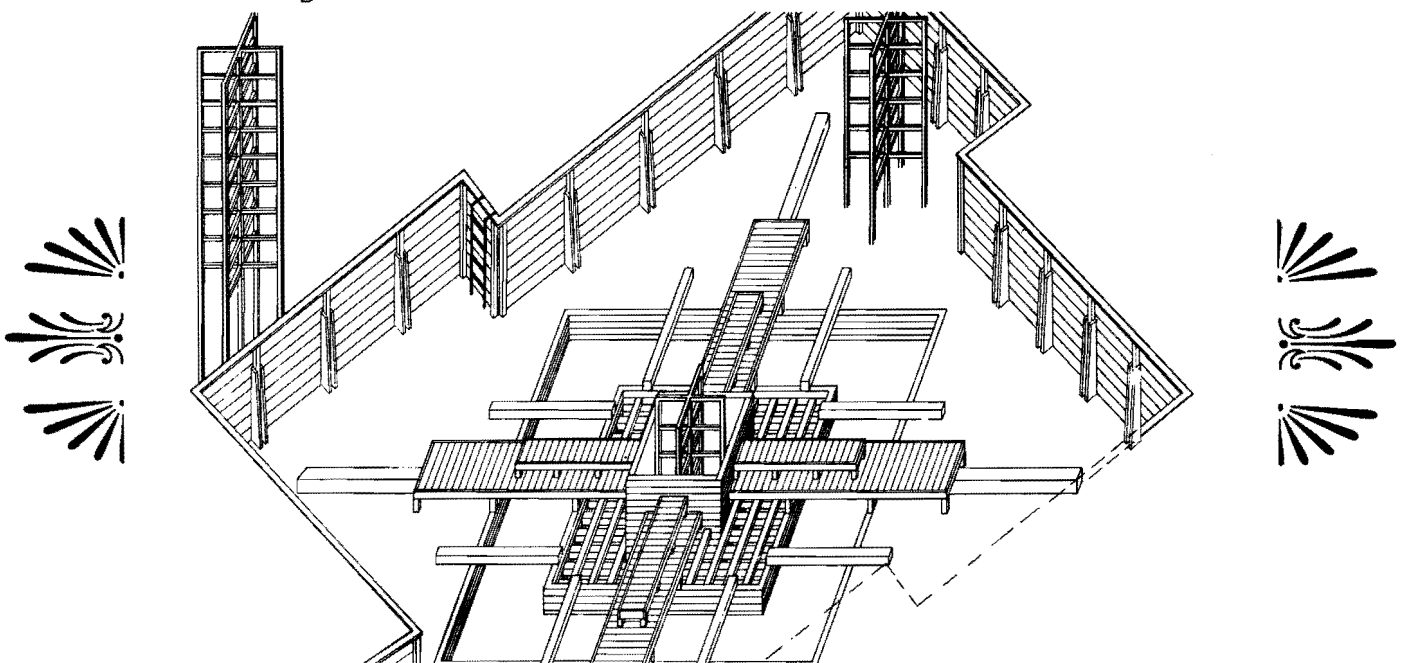
Funded half by the GSU Foundation half by the National Endowment for the Arts, the work is composed of rows of posts, earth mounds, steel towers and a core of intricate wooden lattice work.

The GSU community has been able to view the progress of the work from a distance, and it has been tantalizing to be so close and yet not be able to really get a good look at the construction of the sculpture.

Now, the curiosity of all of us can be satisfied.

Sunday will be your chance to meet Miss and view the work which she and her crew have been working on, dawn to dusk, Monday through Saturday, since the middle of July.

Don't miss the chance!



Center of the sculpture

drawing by Mary Miss

NEWS OF SPECIAL INTEREST

GSU TO OFFER TV COURSES . . . Five televised courses, or "telecourses" are being offered by GSU and may be seen as part of the regular scheduling on PBS Channel 50 in St. John, Indiana. At the same time, several cable TV outlets, including Kankakee Cable, Metrovision and Joliet Communications, will pick up the Channel 50 signal, and broadcast it to their customers.

Two of the courses are offered for graduate credit only, starting August 29 on Channel 50 and September 2 on Kankakee Cable. Of the remaining three, two will be for undergraduate or graduate credit and one will be for undergraduate credit only.

All courses are offered for 3 hours of credit, except "Understanding the Cosmos," which will be for two hours of credit.

While advance registration is recommended, students may register by mail or at the first session of the individual courses.

For further information, contact Joyce Newman or Odessa Nolin, Special Programs, Ext. 2549.



SPECIAL ANNOUNCEMENT . . . Frank Borelli, Dean of Student Affairs and Services, announces that during Phyllis Bacon's absence from campus, all internal requests for facilities should be directed to Dr. James Lohman in the Registrar's Office on Ext. 2148 or 2165. Requests for facilities from individuals or groups outside the University should be directed to Tommy Dascenzo in the Student Activities Office on Ext. 2123. These changes are now in effect and will remain until Ms. Bacon returns on or about October 1, 1981.

CAFETERIA NOTE . . . The cafeteria will be closed from Friday, August 14, 2 p.m., and will remain closed until Wednesday, August 26th, when it will reopen at 11 a.m.

A RETIREMENT PARTY . . . So that all her friends may have a chance to express their best wishes, a retirement party is to be held in the Honors Dining Room for JEAN DEKKER, 3 p.m. to 5 p.m. Friday. All her friends are welcome to drop in for a chat and refreshments.

GSUings . . . DON HERZOG (BPA), attending conferences this summer; one, July 17, a Coal Conference on the handling and transporting of coal through the Port of Los Angeles to Japan. Don attended as an engineering consultant at the invitation of the Executive Director of the Port of Los Angeles.

Don also was present at the Illinois Conference sponsored by the Illinois Congressional Delegation in cooperation with the Chicago Association of Commerce and Industry, at the Conrad Hilton, Chicago on August 4th.

PUBLISHED . . . DAVE BURGEST (HLD) has an article in the BLACKS BOOK BULLETIN, published by the Institute of Positive Education, Vol. 7, No. 2, Summer, 1981, titled "Theory on White Supremacy/Black Oppression."



NOTE OF FAREWELL:

"I thought I would have until the 31st of August to say goodbye to all of the wonderful people it has been my good fortune to have as associates during the 9 years I have made GSU my 'working home. Now I find that I will be on jury duty during the last 2 weeks in August.

"So, I will say by goodbyes now, and in this manner: THANK YOU, ONE AND ALL, FOR NINE WONDERFUL YEARS!!!!!"

Lura Jean Dekker

NOTE OF THANKS: "I'm coming along just fine, and the news is good. Thanks to all of you at GSU for your wishes, cards and those beautiful plants!"

Phyllis Bacon



"Fame is vapor, popularity an accident, riches take wings. Only one thing endures and that is character."

--Horace Greeley

# EVENTS

## FRIDAY, August 14, 1981

8:00 p.m. Outdoor Folkfest (Outside by the Lake)

## SATURDAY, August 15

5:00 p.m. SPRING/SUMMER TRIMESTER ends

## SUNDAY, August 16

4:00 p.m. Strukoff Duo Recital (MRH)  
7:30 p.m. Celebration of the completion of Mary Miss Sculpture--  
Everyone invited (On Sculpture site)

## MONDAY, August 17

10:30 a.m. - 5:00 p.m. Graduate Art Exhibit: Paintings and Drawings, by  
Kathleen Cothroll. Monday-Thursday hours through  
September 10. (Visual Arts Gallery--B Wing)

## THURSDAY, August 20

2:30 p.m. - 4:00 p.m. Civil Service Senate (EH)

## SATURDAY, August 22

7:30 a.m. - 5:30 p.m. Insurance Testing (A1102)  
\*\*\*\*\*

D E A D L I N E . . . for Faze I news is Wednesday NOON. Send to Editor, UR.

Editor . . . . . Betty A. Kott  
Assisted by. . . . . Pat Burkhardt  
\*\*\*\*\*

LIBRARY HOURS: TRIMESTER BREAK . . . The Library will be open 8:30 a.m. - 5:00 p.m.,  
Monday-Friday, August 17-28. It will be closed Saturdays, August 22 and 29.  
\*\*\*\*\*

DIAL "INFO LINE" 534-0033 FOR RECORDED UNIVERSITY ANNOUNCEMENTS

\*\*\*\*\*

### JOB OPPORTUNITY

GRADUATE ASSISTANT - Institute for Public Policy and Administration, CBPA

Description: Assist GSU Mfni-Grant project directors with research on women's access to elected public office in the GSU service area: help develop a survey instrument; identify and locate women who were candidates for public office in the April 7, 1981 consolidated election; conduct telephone and personal interviews; compile and analyze data; assist in evaluating and documenting the project.

Qualifications: Research and writing skills; concern for women's rights; experience and/or interest in public administration.

Requirements: Graduate student carrying a minimum of six credit hours; work twelve hours per week, September 8 till end of trimester.

Compensation: \$240/month

Submit application by August 28, 1981 to:

Paul Green and Beverly Goldberg  
Institute for Public Policy and Administration  
College of Business and Public Administration  
Governors State University  
Park Forest South, IL 60466 312/534-5000, ext. 2246