

1-31-1986

Inscapes, 1986-01-31

Office of University Relations

Follow this and additional works at: <http://opus.govst.edu/inscapes>

Recommended Citation

Governors State University Office of University Relations, Inscapes (1986, January 31). <http://opus.govst.edu/inscapes/36>

This Newsletter is brought to you for free and open access by the University Newsletters at OPUS Open Portal to University Scholarship. It has been accepted for inclusion in Inscapes by an authorized administrator of OPUS Open Portal to University Scholarship. For more information, please contact opus@govst.edu.

ILA KLINE EMPLOYEE OF YEAR... *Ila Kline*, administrative clerk in Physical Plant Operations, received the congratulations of her co-workers when she was named the recipient of an engraved plaque naming her the Civil Service Employee of the Year for 1985. She became eligible for the high honor by being named Employee of the Month last June. *Ila* received not only congratulations, but also something a little more concrete—a check for \$150 from *Barbara Clark*, personnel director.

Ila also received a letter of congratulations, which read: "The administration and staff of Governors State University recognize with appreciation the considerable contribution that your exemplary per-



Barbara Clark (right), personnel director, presents a placque of recognition to **Ila Kline**, the first Civil Service employee at GSU to be named Employee of the Year.

formance makes to the efficient operation of a vital unit of the University." *Ila* said, "I was really happy and pleased to be chosen for the honor, and I want to thank those who nominated and voted for me." She has been appointed by the Civil Service Senate to the selection committee and wants to encourage everyone to participate by sending in nominations of worthy candidates for Employee of the Month.

The 1985 selection committee included **Dr. Lawrence Freeman** (CE), **William Gregory** (PPO), **Joyce Gordon** (BO), **Charleyn Oliver** (CHP), and **John Payne** (CAS).

BEST THINGS IN LIFE ARE FREE... Except for a bitter cold spell in December, GSUers have been lucky this winter. But February and March lie ahead, and at any time during those frigid months you could be in need of the services of the Quick Start Escort Service—something new this school year. From 4 until 11 p.m. Monday through Thursday and 2 to 9:30 p.m. Friday, there is a courteous and helpful friend waiting near the main entrance to offer you a variety of services. Like help with a flat tire, frozen lock, dead battery dry radiator or empty gas tank. Or simply an escort to your car at night. The attendant may give you a referral for towing if that is needed. And if you are locked out of your car, he/she will refer you to the university's Department of Public Safety for help.

That's a lot of friendly service, you might say. You also might say, "What does it cost me?" Not one red cent! It's all free, courtesy of Governors State University Parking Service. When in need, just come to the table inside the main entrance across from the Information Booth during "business hours." For further information, call **Chris Tolbert** on extension 2230 or **Tom Call** on extension 2160. Who says there's no such thing as a free lunch?

MORE "GSU VIEWS" COMING... Four new segments of "GSU Views," the half-hour talk show for cable TV, are in the can and ready for airing in February and March. **Pres. Leo Goodman-Malamuth** hosts the show, which features members of the GSU faculty and staff discussing a wide variety of topics of public interest. Guests on the most recently taped shows are **Joyce Newman**, continuing education coordinator; **Dr. June Patton**, university professor of history; **Richard Pride**, director of admissions; and **Dr. Thomas Kelly**, university professor of urban history.

"GSU Views" is transmitted directly from the university to Jones Intercable Park Forest Channel 46 and Centel Cable Channel 37 serving nine south suburban communities. They are University Park, Crete, Matteson, Olympia Fields, Flossmoor, Hazel Crest, Thornton, Lansing and Richton Park. Selected programs also are seen by 48 other communities served by Cablenet Channel 93, Jones Intercable/Orland Park Channel 4, Metrovision Channel 4, Multimedia Cablevision Channel 10 and Continental Channel 22.

The programs are produced in the studios of the Instructional Communications Center at Governors State. TV producer/director **Tony Labriola** (ICC) utilizes both professional staff and student assistants in the production. **Bob Jaynes** (UR) acts in the capacity of executive producer. If you have an interesting subject which you would like to discuss with the president on this show, contact Jaynes at extension 2122.

For specific programs and viewing times, check the local cable TV listings or call the cable office.

CONDOLENCES... Mr. and Mrs. **Raymond Benn** (he was former director of Public Safety at GSU) on the recent death of their daughter, **Deborah Benn Terry**, after a long illness. The Benns are trustees for **Deborah's** 3-year-old daughter. Letters or contributions may be sent to them at 885 Foley St., Kankakee, IL 60901, or to the Oncology Ward of St. Mary's Hospital, 500 W. Court, Kankakee, IL 60901.

ALUMNI OFFICE SEEKS PHONATHON VOLUNTEERS... Alumni Relations is seeking 100 volunteers to assist in the annual alumni fund drive phonathon during the evenings of March 10-27. Funds collected this year will be used to benefit the University Library, to support satellite video conferencing and to underwrite student scholarships.

The agenda for each evening includes a light dinner at 5:30 followed by a short period of instruction. Calls will be made between 6:30 and 9:30 from 20 telephones installed in Engbretson Hall.

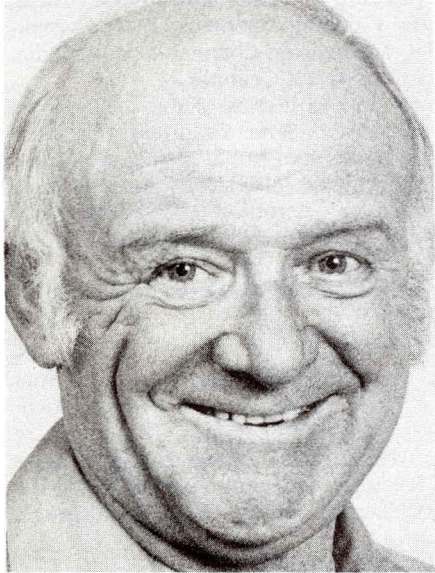
Special prizes will be presented to volunteers who raise the most money each night. For further information, contact the office of **Ginni Burghardt**, executive coordinator of alumni relations, at extension 2215.

GSU ARCHIVES



WAKAL IS FIRST EOTM OF 1986... Harry Wakal, PPO, has the honor of being named the first Employee of the Month in 1986 for January. Nobody else will ever be able to lay claim to that title, and that makes him unique in all the universe. Only a unique individual could ever say—as Harry did when advised of this honor—that he likes everything about his job, especially working outside, even in 27 degrees below zero weather!

Harry came to GSU as a maintenance laborer in 1978. He removes snow, repairs equipment, jumps car batteries and changes tires, cuts grass, waters, weeds— you name it, Harry does it. One of the reasons he enjoys working here, he says, is his “workaholic supervisor,” Jo Shaw. His four co-workers and the whole PPO staff also have helped make his job more enjoyable, he claims. He says he



**JANUARY
EMPLOYEE
OF
MONTH**

Harry Wakal

was dumbfounded when he received this award, and he immediately blew a bike horn he had just bought to celebrate Ila Kline’s award as Employee of the Year for 1985.

Harry and his wife, Joan, have been married 35 years. Born in Chicago, Harry grew up in Knox, Ind. He relaxes with hunting, fishing and gardening. He can’t wait until spring when he can plant more plastic vegetables in the President’s garden. (Ed. note: There must be an inside joke there somewhere.) Before his job at GSU, he worked for Electric Storage Battery as first class millright and tended the boiler. He said he waited 2-1/2 years to land a job at Governors State and has been really happy to work here.

GSUings...Dr. Joyce Morishita (CAS) showing one of her oil paintings in the Sixty-first Annual Rockford and Vicinity Art Exhibit in January and February and joining with Mary Bookwalter (CAS), printmaker, and photography professors Paul Schranz (CAS) and Jay Boersma (CAS) for a show titled “Four from GSU” in Thiel Gallery at Thornton Community College from Jan. 21 through Feb. 7...**Dr. Melvyn Freed** (CE) being granted a U.S. patent for his invention, the Pryer-Plier, a hand tool with uses as universal as the common plier...**Dr. Michael Lewis** (CE) co-authoring the just published book, *Counseling Programs for Employees in the Workplace*...**Dr. Arthur Bourgeois** (CAS) preparing a review of the University of Notre Dame’s Snite Museum catalog, *Africa and the Americas, a Curator’s Choice*, for publication in *African Arts* journal.

BLACK HISTORY MONTH COMING...February is Black History Month, and there will be at least three major events at Governors State University to help us appreciate the black contribution to our culture. From Feb. 3 to Feb. 28, more than a dozen black artists will participate in the third annual Afro- American Art Exhibit in the Art Gallery. Gallery hours are 10:30 a.m. to 3:30 p.m. Monday through Thursday. **John Payne**, university professor of art and sculptor in residence, can give you more information. On Feb. 21, Dick Gregory, comedian, lecturer and civil rights activist, will present a lecture in the Theater at 8 p.m. This is part of the Community Event Series sponsored by the Office of Student Life. Tickets will be on sale at the Cashier’s Office. Students are admitted free. Finally, Dr. Charles Hicks, director of the GSU-Community Symphonic Band, will conduct a program of music mostly by black composers and arrangers in the Theatre at 4 p.m. on Feb. 23. Bob Petty, newsman from WLS-TV, Channel 7, will be guest narrator. This is a free program.

APOLOGIA HUMILITATIS...Or something like that, to **Beverly Goldberg** (CBPA), who is a Veteran of Innovation dating from Nov. 1, 1978. Somehow her name was not on our list—but it is now. And we hope that we are not on her hit list for making the error. Happy belated anniversary, Bev!

VETERANS OF INNOVATION...Congratulations to the following Governors State University staff members celebrating their anniversaries during January:

1971

Robert Press, CAS 4

Betty Leving, CE..... 4

Shirley Ramirez, PROV/AA 25

1972

Andy Locos, BO(MR)..... 17

Evelyn Pegues, CBPA 17

1973

Tom Call, BO..... 22

1975

Franchon Lindsay, PERS 2

1976

Therese Marcus, SD 5

1977

Arthur Bourgeois, CAS 1

Virginia Lenart, CE 10

Mary Lee Sallander..... 17

1979

William J. Toner, CAS 1

Alan Bennett, A&P 2

Lisa L. Chang, CE 2

Michael Dimitroff, CE..... 8

1980

Robert Woodard, BO(CD) 7

WHAT IS A MENC?...It's a very active student organization sponsored by the Office of Student Life. Members are music students, and they constitute the GSU chapter of the Music Educators National Conference. It's been around for a while, but hardly anybody knew it until this year. Now it's all over the place. Take the cafeteria, for instance. Every Thursday since last fall, there has been some kind of musical entertainment at lunchtime. It has ranged from jazz to the classics, from one person to half a dozen or more, from elementary grade children to—well, you get the idea. And it's all been arranged by "them there MENCs." They have booked the GSU version of the Copa Cabana well into the spring-summer trimester.

In February on successive Thursdays at 12:30 p.m. (oops—on Feb. 20 it'll be 12:15) you will be entertained by the **Jacque Flores** Combo doing "Top 40" songs; by **Acqueline Fuginaga** and **Donna Vaughan** singing love songs and a variety of pop tunes; by tenor **Bob Jaynes**, "The Incurable Romantic;" and by **Joe Cirou**, the singing priest.

In March, they will sponsor what is billed as the "World's Largest Concert." They are inviting school children to come to the campus to participate in a world-wide 30-minute concert via intergalactical satellite hookup. (Maybe even E.T. will chime in?) That month they also are sponsoring a concert by the Clarion Brass, a five-piece professional ensemble based in the southern suburbs. In May, the MENCs will sponsor a vocal master class led by our own **Dr. Rudolf Strukoff**. Who says there is no culture in the southern suburbs?

The organization is led by **Lynn Godfrey**, president; **MaryLynn Wessell**, vice president; **Ruth O'Lena**, secretary; and **Donna Lowe**, treasurer.

THREE PHOTOGRAPHERS EXHIBIT IN GALLERY...Three photographic artists with widely different styles will be represented in the exhibit hanging in Infinity Gallery from Feb. 7 until Feb. 29. **Merry Moor-Winnett**, Greensboro, N.C., will include tinted black and white photos in her contribution to the display. She participated in more than 35 juried or invitational exhibits during 1985 alone. **Ernest Scott**, Chicago, is showing 25 prints from his "Torso" nude series. **Patricia McPheron** is sending ten color prints from Albuquerque, N.M. They are based on collages made by the photographer and integrated into one unified surface.

There will be an artists' reception on Feb. 7 at 5:30 p.m. The Infinity Photographers Association, a student organization, sponsors the photo exhibits and the receptions, which are almost legendary at GSU. If you have never attended one of them, this may be a good time to give it a try.

STAFF DIRECTORY REVISIONS..Please note the following revisions in the new Staff Directory:

EYSENBACH, VIRGINIA
Editorial Assist., UR
Ext. 2418

KIRK, SHANNON
Ext. 2532

STACY, SANDRA
Grad. Placement Officer, SD
Ext. 2163

WARD, CAROL
Cashier, BO (Parking Booth)
Ext. 2561

Please remove the following names from your directory:

HUGHES, MARY

NEAL, IRA N.

