

10-8-1986

Inscapes, 1986-10-08

Office of University Relations

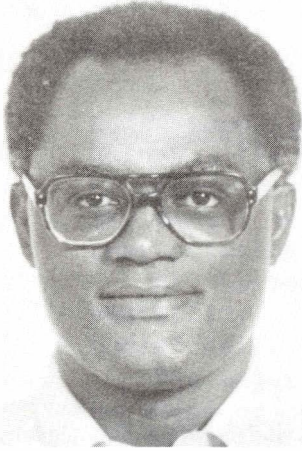
Follow this and additional works at: <http://opus.govst.edu/inscapes>

Recommended Citation

Governors State University Office of University Relations, Inscapes (1986, October 8). <http://opus.govst.edu/inscapes/51>

This Newsletter is brought to you for free and open access by the University Newsletters at OPUS Open Portal to University Scholarship. It has been accepted for inclusion in Inscapes by an authorized administrator of OPUS Open Portal to University Scholarship. For more information, please contact opus@govst.edu.

DR. JOSEPH ADDISON—HE'S COME A LONG WAY...Dr. Joseph Addison has been a professor of physical sciences in the College of Arts and Sciences at Governors State since December of 1981.



1984-85. **Dr. Joseph Addison**

Before joining the staff at Governors State, Dr. Addison was with the New Brunswick Research and Productivity Council, the National Research Council of Canada, and the chemistry department of McMaster University in Hamilton, Canada.

He has had numerous articles published in professional journals and is a recipient of the Outstanding Faculty Award.

Dr. Addison's leisure activities include tennis, squash, racquetball, bible study and listening to classical music. With his wife, **Jane Edith**, and two children, he lives in Park Forest.

CORRECTION...The silk-screen demonstration by artist **Nancy McGee** on Oct. 17 will take place at both 9:30 a.m. and 2 p.m. in the Printmaking Studio.

SINCERE CONDOLENCES TO...**Dr. Otis Lawrence** (BOG) on the passing of his mother on Friday, Sept. 19 in Oklahoma City. And to former employee **Ardis Pribyl** on the passing of her mother, also in September.

GSUings...**Dr. Leo Goodman-Malamuth II** being named Outstanding Citizen of the Year by the Chicago South Suburban Chamber of Commerce and being appointed chairman of the board of trustees of the Union of Experimenting Colleges and Universities. **Dr Hugh Rank** (CAS) attending the national conference of the Fulbright Alumni Association held Oct. 16 in Chicago at the Art Institute. **John Payne** (CAS), sculptor in residence, recently exhibiting 24 welded metal and cast bronze sculptures at the South Shore Bank Gallery in Chicago. **Dr. Barbara Jenkins** (CE) attending a press reception in September to announce the recipient of the 1986 Public Humanities Award at the offices of the Illinois Humanities Council...**John Ostenburg** (UR) co-authoring an article on "Lobbying" in the September/October 1986 edition of *Cooperative Housing Bulletin*. Also being selected by the *Hammond Times* to serve as one of its regular Sunday "Op-Ed" page columnists. His columns on "Education" will begin in October and run every few weeks...**Dr. David Curtis** (A&P) serving as part of a three person consulting team selected by the American Association of State Colleges and Universities (AASCU) to visit Illinois State University to make recommendations regarding the College of Education.

SCULPTURE CASTING WORKSHOP PART OF FESTIVAL...**Kathryn Field**, art faculty member at Western Michigan University in Kalamazoo will discuss her work, and present a slide lecture and demonstration of the use of black tuff as a mold

material on Oct. 18 from 9:30 a.m.-3 p.m. The morning session of the workshop will meet in Room E 1602. The afternoon session will take place from 1-3 p.m. in Room E 1303 and includes a casting demonstration by John Payne.

Field has had numerous exhibits throughout the United States and is currently on the faculty of Western Michigan University in Kalamazoo, Mich. The workshop is free to students and other interested guests. For further information, please contact Professor Payne at extension 2412.

TELEPHONE DIRECTORY REVISIONS...Please make the following revisions in your staff directory:

Change...

Secretary's extension for Anna Kong and Joyce Kennedy is 2449

Monica Johnson
Data Proc. Analyst
Ext. 2343

Gerald Baysore
Ext. 2343

Louise Kohl
Ext. 2339

Leon Zalewski, CE
University Prof. of Science Ed.
Ext. 2475, 2354

Center for Learning Assist.
Ext. 2336

Melvin Freed, A&P
Research Associate
Ext. 2346-7-8-9

Anna Henderson, PPO
Secretary
Ext. 2181-2-3

Diane Kjos, SD
Outreach Counselor and
University Prof.
Ext. 2281 (in addition
to her other extension)

Mary Bulliner
Ext. 2336

William Kryspin, A&P
Director of Institutional
Research
Ext. 2346-7-8-9

David Jenkins, A&P
Ext. 2346

Barbara Smith
Ext. 2339, 2341-2

Jay Boersma's secretary's
extension is 2461

George Vesvardes, U.P. Shop
Bookbindery Assistant
Ext. 2191-2

Please add the following...

Dale Velkovitz, CBPA
University Prof. of Accounting
Ext. 2272

David Blood, CE
University Prof. of Ed.
Ext. 2174

John Meyer, CE
University Lecturer
Ext. 2273

Michael Kamowski, REG
Data Proc. Analyst
Ext. 2127

George Garrett, CE
University Prof. of
Ed. Administration
Ext. 2188

Ronald Small, CE
University Prof. of
Ed. Administration
Ext. 2376

Patsy Hoskin, PPO
Switchboard Op.
Ext. 0

Lynne Terrien, PPO
Switchboard Op.
Ext. 0

Mike Mitchell, CLA
Training Assist.
Ext. 2336

Sheldon Mendelson, CBPA
University Lecturer
Ext. 2247

Ginni Burghardt
Director of Alumni Relations

Janice Schultz
Assistant to the President
Affirmative Action Officer

Peggy Woodard, SD
Outreach Counselor
University Prof.
Ext. 2142

Helen Beaumont, SPCE
Continuing Ed. Center Manager
Dempster Site
(312) 439-7550

Daiva (Gogola) Karuza, CAS
Ext. 2447

Phyllis Mitchell, PPO
Building Service Worker
Ext. 2426

Jamie Smith, CE
University Prof.
Ext. 2203

Evelyn Sowell, CE
Division Chairwoman
Ext. 2415

Deborah Terrell, SPCE
Secretary, Dempster Site
(312) 439-7550

Linda Heiser, A&P
University Planner
Ext. 2346

Please remove the following...
Carol Hughes
Marcia Carter
Joan Ruane

Charleyn Oliver
Mary Lou Manzardo
Evelyn Robinson
Pam Ponton
Ouida Drummond
Sally DiCicco
Loretta Augustine
Bettye Carter
Burgess Gardner
Cynthia Hendler
Grace Hopkins
Linda Moses
Rita Mannion
Susan Plate
Milton Sens
Vivian Vaughn
Benjamin Weeks
Kenneth Whittemore
Dan Kies
Roberta Ruiz

HONORARY DEGREE NOMINATIONS SOUGHT...Governors State University is calling for nominations for the June 1988 commencement exercises. There are two criteria for awarding honorary degrees:

1. Degrees may be awarded "in recognition of persons who have achieved a record of major distinction at the state or national level..."
2. ...in exceptional cases, candidates may be considered, who ..., have made an especially outstanding and significant contribution to the BOG, its universities, or higher education in Illinois..."

Deadline for recommendations is Oct. 30, 1986. Nominations should be sent to **Dr. Virginio L. Piucci** (A&P).

Cafeteria Menu

Week of October 6-10

Monday—Chicken rice soup w/1 pkg crackers; Chili con carne w/1 pkg crackers; ENTREE: Swiss steak; Breaded turkey patty; French style green beans; Whipped potatoes. **Tuesday**—French onion soup w/1 pkg crackers; ENTREE: Roast beef aujus; Lasagne w/meat, garlic toast; Mixed vegetables; Whipped potatoes. **Wednesday**—Vegetable soup w/1 pkg crackers; Chili con carne w/1 pkg crackers; ENTREE: Hoagie steak and grilled onion; Popcorn shrimp; Buttered broccoli; Whipped potatoes. **Thursday**—Beef noodle soup w/1 pkg crackers; Chili con carne w/1 pkg crackers; ENTREE: Chicken fricassee; Sloppy Joe on bun; Buttered peas; Whipped potatoes. **Friday**—Soup dejour w/1 pkg crackers; ENTREE: Seafood croquette w/cream sauce; Vegetable dejour; Whipped potatoes.

Week of October 13-17

Monday—Chicken noodle soup w/1 pkg crackers; Chili con carne w/1 pkg crackers; ENTREE: Roast beef aujus; Spaghetti w/meat sauce, salad, garlic toast; Seasoned peas and carrots; Whipped potatoes. **Tuesday**—Split pea soup w/1 pkg crackers; Chili con carne w/1 pkg crackers; ENTREE: Chuck wagon steak w/brown gravy; Oriental chop suey over rice, roll and butter; Corn O'Brien; Whipped potatoes. **Wednesday**—Garden vegetable soup w/1 pkg crackers; Chili con carne w/1 pkg crackers; ENTREE: Liver and onions; Five fried wing dings w/fries and cole slaw; Seasoned spinach; Whipped potatoes. **Thursday**—Beef barley soup w/1 pkg crackers; Chili con carne w/1 pkg crackers; ENTREE: Potted Luncheon steak jardiniere; Italian sausage, tomato sauce, peppers on French bread; Seasoned cut broccoli; Whipped potatoes. **Friday**—Manhattan clam chowder w/1 pkg crackers; Chili con carne w/1 pkg crackers; ENTREE: Fried perch w/fries and cole slaw; Baked macaroni and cheese; Vegetable dejour.



BOARD OF GOVERNORS OF
STATE COLLEGES AND
UNIVERSITIES

GSU ARCHIVES

System Office
2040 Hill Meadows Drive, Suite B
Springfield, Illinois 62702

NOTES NOTES FROM THE SEPTEMBER 1986 BOARD MEETING

Board Approves FY88 Budget -- The Board of Governors of State Colleges and Universities (BOG) unanimously approved a budget request presented to the Board by Chancellor Thomas D. Layzell, of \$207,381,900 for Fiscal Year 1988 (FY88). The amount is \$31,289,000, or 17.8 percent, over the System's Fiscal Year 1987 appropriation of \$176,092,878.

Dr. Layzell indicated that the budget request is intended to increase the visibility of the System and to address the continuing problems of underfunding and salary deficiencies of faculty and civil service staff.

The major portion of the proposed increases in FY88 would go toward expanded or improved academic programs at the five BOG universities, including the establishment of a College of Engineering at Chicago State University (CSU). In addition, more than \$11.5 million would be set aside for salary increases for the System's employees, including an average five percent salary increase for employees, with an additional four percent being requested for salary market equity adjustments for faculty and civil service employees.

Under the proposal adopted by the BOG, the FY88 operating budget of each of the five universities is as follows: \$33,245,200 at CSU, an increase of 17 percent; \$46,640,400 at Eastern Illinois University (EIU), an increase of 17 percent; \$22,772,400 at Governors State University (GSU), an increase of 14.1 percent; \$40,658,000 at Northeastern Illinois University, an increase of 17 percent; and \$56,914,300 at Western Illinois University (WIU), an increase of 10.9 percent.

The FY88 budget request now goes to the Illinois Board of Higher Education (IBHE). It will then be prepared as an appropriation bill for the 1987 session of the Illinois General Assembly, with final approval resting with the Governor.

Labor Agreements Approved -- The Board approved labor agreements affecting more than 300 employees in the BOG System. Agreements were reached with the following unions:

- Teamsters Local #714, representing approximately 43 employees in the Building Service Worker classification at Northeastern;
- The American Federation of State, County and Municipal Employees, Council 31, on behalf of Local No. 1989 representing approximately 218 employees in various clerical and technical classifications at Northeastern;
- Fraternal Order of Police Lodge #104 representing approximately eight employees in Police Officer and Police Telecommunications classifications at GSU;
- Service Employees International Union, Local 321, representing approximately 16 employees in the classification of Building Service Worker at GSU; and
- Service Employees International Union, Local 31, representing approximately 42 employees in the Building Service Worker classification at CSU.

The salary increases in these agreements range from approximately 5.5 percent to approximately 6.5 percent.

Board of Governors of State Colleges and Universities System:

Chicago State University • Eastern Illinois University, Charleston • Governors State University, University Park
Northeastern Illinois University, Chicago • and Western Illinois University, Macomb

Academic Program Matters -- The Board approved Chancellor Layzell's request for reasonable and moderate extensions of existing academic programs at EIU and WIU. At EIU, the Board approved a request to add a Manufacturing Technology Option to the existing degree program in Industrial Technology. At WIU, the changes the Board approved included:

- the addition of an Industrial Operations Management Option to the Bachelor of Business Degree Program in Operations Management;
- the addition of three options in the Bachelor of Business Degree Program in Management:
 - Organizational Behavior/Organization Development;
 - Organization Management; and
 - Small Business Management
- the addition of the following four options to the Bachelor of Science degree program in Home Economics:
 - Child Development/Family Life/Gerontology;
 - Apparel, Textiles and Design/Merchandising;
 - Foods, Nutrition, and Dietetics; and
 - Food Service and Lodging Management

The next step is for the proposals to be sent to the IBHE for review and action.

Board Holds Discussion Sessions on Current Issues in Higher Education -- The Board met on Sunday, September 14 in open session for the purpose of hearing presentations and having discussions on: (1) Current Issues in Teacher Education; and (2) The Role of the Foundation in the Development of BOG Universities.

Presentations on teacher education matters were made by: Dr. Gary A. Griffin, Dean of the College of Education, University of Illinois at Chicago; Dr. Arnold M. Gallegos, Dean of the College of Education at Western Michigan University in Kalamazoo, and Dr. David Taylor, Dean of the College of Education at Western Illinois University. The five BOG Deans of the College of Education participated in a discussion with the Board and Dr. Taylor presented a paper on "Teacher Preparation Programs and the BOG Universities."

In addition, Dr. Ralph Wagoner, Vice President for Public Affairs and Development at WIU, moderated a panel presentation by university development and public affairs division heads and presidents of the five university foundation boards.

ad hoc Committee on Bylaws, Policies and Regulations -- Dominick J. Bufalino, Chairman of the Committee, presented the first reading of proposed amendments to sections three, four, six and seven of the Board's Regulations. The Committee was created in December, 1985 to determine revisions necessary in the regulations as a result of the creation of the Chancellor/Presidents form of organization which was adopted in October, 1985.

Members of the Board of Governors of State Colleges & Universities

Nancy H. Froelich, Lake Bloomington, Chairman	William E. Hoffee, Fairfield Evelyn Kaufman, LaSalle
James L. Althoff, McHenry, Vice Chairman	Robert J. Ruiz, Chicago
Dominick J. Bufalino, Norwood Park Twnshp.	Wilma J. Sutton, Chicago
Lowell B. Fisher, Fairview	D. Ray Wilson, Elgin

Student Board Members

Eddie Kemp, Chicago State University	Tom Shaw, Northeastern Illinois University
Michael Ashack, Eastern Illinois University	Stephen Eckhart, Western Illinois University
Larry Lulay, Governors State University	

Week of October 20-24

Monday—Cream of chicken soup w/1 pkg crackers; Chili con carne w/1 pkg crackers; ENTREE: Ham steak; Turkey imperial sandwich; Buttered carrots; Sweet potatoes. **Tuesday**—Old fashioned bean soup w/1 pkg crackers; Chili con carne w/1 pkg crackers; ENTREE: Breaded pork cutlet w/brown gravy; Sloppy Joe on bun; Stewed tomatoes and zucchini; Whipped potatoes. **Wednesday**— Cream of spinach soup w/1 pkg crackers; Chili con carne w/1 pkg crackers; ENTREE: Veal cutlet parmesan; French dip beef on roll; Medley vegetables; Whipped potatoes. **Thursday**—Minestrone soup w/1 pkg crackers; Chili con carne w/1 pkg crackers; ENTREE: Baked meatloaf; Creamed turkey over noodles; Peas and carrots; Whipped potatoes. **Friday**—Soup dejour w/croutons; Chili con carne w/1 pkg crackers; ENTREE: Popcorn shrimp, sauce, fries and cole slaw; Batter fried whiting; Vegetable dejour.

Week of October 27-31

Monday—Creole soup w/1 pkg crackers; Chili con carne w/1 pkg crackers; ENTREE: Beef pot roast; Mostaccioli w/meat sauce and garlic toast; Wax beans and pimento; Whipped potatoes. **Tuesday**—Lima bean soup w/1 pkg crackers; Chili con carne w/1 pkg crackers; ENTREE: Roast turkey breast w/dressing; B.B.Q. beef sandwich; Seasoned peas; Candied sweet potatoes. **Wednesday**—Cream of celery soup w/1 pkg crackers; Chili con carne w/1 pkg crackers; ENTREE: Roast pork w/dressing and apple sauce; Swedish meatballs over rice, roll and butter; Mixed vegetables; Oven-browned potatoes. **Thursday**—Garden vegetable soup w/1 pkg crackers; Chili con carne w/1 pkg crackers; ENTREE: Fillet of chicken, fries and cole slaw; Fillet of chicken sandwich w/lettuce and tomato; Two tacos with trimmings; Franks and beans. **Friday**—Tomato rice soup w/1 pkg crackers; Chili con carne w/1 pkg crackers; ENTREE: Baked haddock in creole sauce; Pizza slice; Vegetable dejour; Whipped potatoes.

Entrees include vegetable, potato, roll and butter. Menu items are subject to change.

YOU CAN LEARN TO RELAX...According to **Paul Hellman**, management consultant and author of *Ready, Aim, You're Hired!*, we can learn to relax when faced with a stressful situation like giving a speech or being interviewed. Sitting in a chair with your eyes closed, concentrate on feeling your body become heavy. Then relax your toes feeling them grow heavy and warm. Concentrate on moving the relaxed feeling up to your feet and ankles until they are relaxed. Let the warm and heavy feeling travel up your body, giving extra attention to your neck, eyes and jaw. Repeat the process, if necessary, starting with your fingers and ending with your toes.



"We can't play doctor today . . . my dad is using the golf clubs."